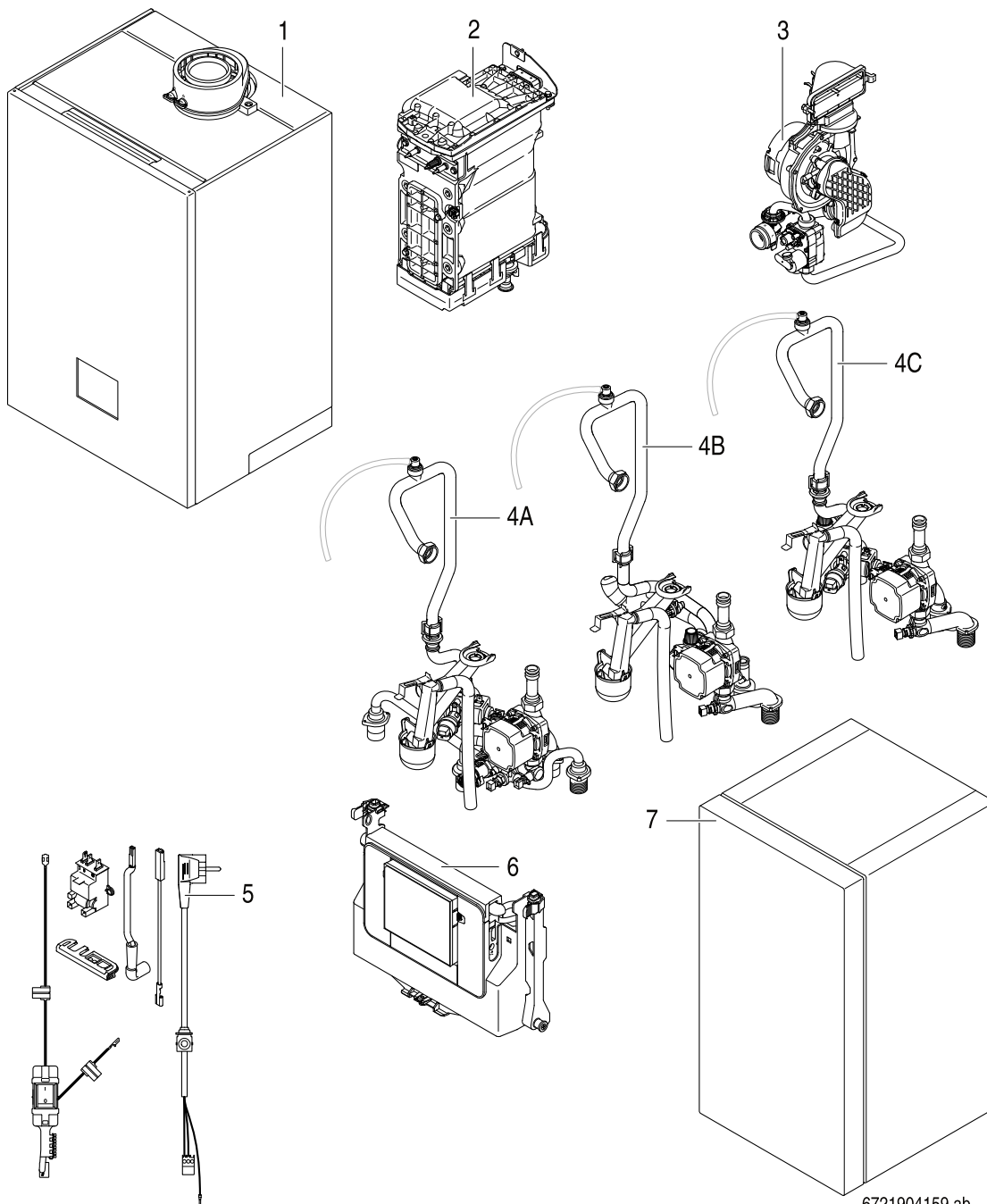


# GB192i.2 15-50 / GB192i.2-30 T40S GBH192i.2 15-35





**[de] Wichtige Hinweise zur Installation/Montage**

Die Installation/Montage muss durch eine für die Arbeiten zugelassene Fachkraft unter Beachtung der geltenden Vorschriften erfolgen.

**[en] Important notes on installation/assembly**

The installation/assembly must be carried out by a qualified contractor, following these instructions and in compliance with the applicable regulations.

**[fr] Instructions importantes pour l'installation/le montage**

L'installation/le montage doit être effectué(e) par un spécialiste qualifié pour les opérations concernées et dans le respect de la présente notice et des prescriptions applicables.

**[bg] Важни указания във връзка с инсталацията/монтажа**

Инсталацията/монтажът трябва да се извършва от лицензиран за работите специалист в съответствие с настоящото ръководство и с приложените разпоредби.

**[cs] Důležité pokyny k instalaci/montáži**

Instalaci/montáž musí při dodržení pokynů uvedených v tomto návodu a platných předpisů provést odborný pracovník s příslušným oprávněním pro tyto práce.

**[da] Vigtige anvisninger til installationen/monteringen**

Installationen/monteringen skal foretages af en godkendt installatør under overholdelse af denne vejledning og de gældende forskrifter.

**[el] Σημαντικές υποδείξεις για την εγκατάσταση/συναρμολόγηση**

Η εγκατάσταση/τοποθέτηση πρέπει να ανατίθεται σε εκπαιδευμένο για τις συγκεκριμένες εργασίες τεχνικό προσωπικό με τήρηση αυτών των οδηγιών καθώς και των σχετικών προδιαγραφών.

**[es] Indicaciones importantes para instalación/montaje**

La instalación/el montaje debe realizarla personal especializado que esté autorizado para realizar estos trabajos y que tenga en cuenta estas instrucciones y la normativa vigente.

**[et] Olulised juhised paigaldamiseks/montaažiks**

Paigaldamist/montaaži tohib läbi viia vaid selleks volitusi omav spetsialist, arvestades kehtivaid nõudeid.

**[nl-BE] Belangrijke aanwijzingen betreffende de installatie/montage**

De installatie/montage moet worden uitgevoerd door een voor de werkzaamheden geautoriseerde installateur rekening houdend met deze handleiding en de geldende voorschriften.

**[fi] Tärkeitä asennus- ja kokoonpano-ohjeita**

Näihin töihin hyväksytyt ammattiasentajan pitää suorittaa asennus- ja kokoonpanotyöt voimassa olevien määräysten mukaisesti.

**[hu] Fontos tudnivalók az installáláshoz/szereléshez**

A telepítést/szerelést egy, a munkálatokra felhatalmazott szakembernek kell végeznie, jelen utasítás és az érvényes előírások figyelembevételével.

**[it] Avvertenze importanti per l'installazione/il montaggio**

L'installazione/il montaggio deve aver luogo ad opera di una ditta specializzata ed autorizzata in osservanza di queste istruzioni e delle direttive vigenti.

**[ka] მნიშვნელოვანი მითითებები ინსტალაციისთვის/მონტაჟისთვის**

ინსტალაცია/მონტაჟი უნდა განხორციელდეს სამუშაოებისთვის დაშვებული კვალიფიციური პერსონალის მიერ, მოქმედი განაცხადის დაცვით.

**[it] Svarbios instaliavimo ir (arba) montavimo nuorodos**

Instaliavimo/montavimo darbus, laikydamiesi šios instrukcijos reikalavimų ir galiojančių taisyklių, privalo atlikti šioms darbams įgalioti specialistai.

**[sq] Shënime të rëndësishme për instalimin/montimin**

Instalimi/montimi duhet të bëhet nga një kontraktues i kualifikuar, duke ndjekur këto udhëzime dhe në përputhje me rregulloret në fuqi.

**[lv] Svarīgi norādījumi par iekārtas uzstādīšanu / montāžu**

Uzstādīšanu/montāžu jāveic atbilstošajiem darbiem sertificētam speciālistam, ievērojot šo instrukciju un spēkā esošos noteikumus.

**[nl] Belangrijke aanwijzingen betreffende de installatie/montage**

De installatie/montage moet door een erkend installateur volgens de geldende voorschriften worden uitgevoerd.

**[no] Viktig informasjon om installasjon/montering**

Installasjonen/monteringen skal gjennomføres av autoriserte installatører, og installasjonsanvisningen samt gjeldende forskrifter skal følges.

**[pl] Ważne wskazówki dotyczące instalacji/montażu**

Instalację/montaż powinien wykonać specjalista uprawniony do tego typu prac z uwzględnieniem informacji podanych w niniejszej instrukcji oraz aktualnie obowiązujących przepisów.

**[pt] Indicações importantes relativas à instalação/montagem**

A instalação/montagem deve ser efectuada por um técnico autorizado para os trabalhos, respeitando este manual e as prescrições válidas.

**[ro] Indicații importante privind instalarea/montajul**

Instalarea/montajul trebuie realizate de către un specialist autorizat pentru lucrările respective, respectându-se prezentele instrucțiuni și prescripțiile valabile.

**[ru] Важные указания по подключению/монтажу**

Подключение/монтаж должны выполнять только специалисты, имеющие допуск к выполнению таких работ, при соблюдении требований этой инструкции и действующих норм и правил.

**[sk] Dôležité pokyny týkajúce sa inštalácie/montáže**

Inštaláciu/montáž musí vykonať odborný personál, ktorý má oprávnenie pre výkon týchto prác, pričom musí dodržiavať pokyny uvedené v tomto návode a platné predpisy.

**[sl] Pomembni napotki za namestitvev/montažo**

Inštalacijo/montažo lahko izvede samo pooblaščen strokovnjak ob upoštevanju teh navodil in veljavnih predpisov.

**[sr] Važna uputstva za ugradnju i montažu**

Ovu instalaciju/montažu moraju da obave stručna lica koja su ovlašćena za obavljanje takvih radova u skladu sa ovim uputstvom i važećim propisima.

**[sv] Viktiga anvisningar för installation/montering**

Installationen/monteringen måste utföras av en behörig och tekniskt utbildad person enligt denna anvisning samt gällande föreskrifter.

**[tr] Kurulum/Montaj ile ilgili önemli uyarılar**

Kurulum/montaj, bu çalışmalarını yapmasına müsaade edilen uzman kişiler tarafından işbu kılavuz ve geçerli yönetmelikler dikkate alınarak yapılmalıdır.

**[uk] Важливі вказівки щодо установки/монтажу**

Встановлення/монтаж повинні виконувати фахівці, що допущені до виконання таких робіт, із дотриманням цієї інструкції та діючих приписів.

**[zh] 安装方面的重要提示**

安装和组装工作必须由经过许可的专业人员进行，同时必须遵守本说明书和现行法规的相关要求

**[ar] ملاحظات هامة للتثبيت/التجميع**  
يجب أن يتم التثبيت/التجميع من قبل متخصص مصرح له بالعمل، مع مراعاة اللوائح السارية.

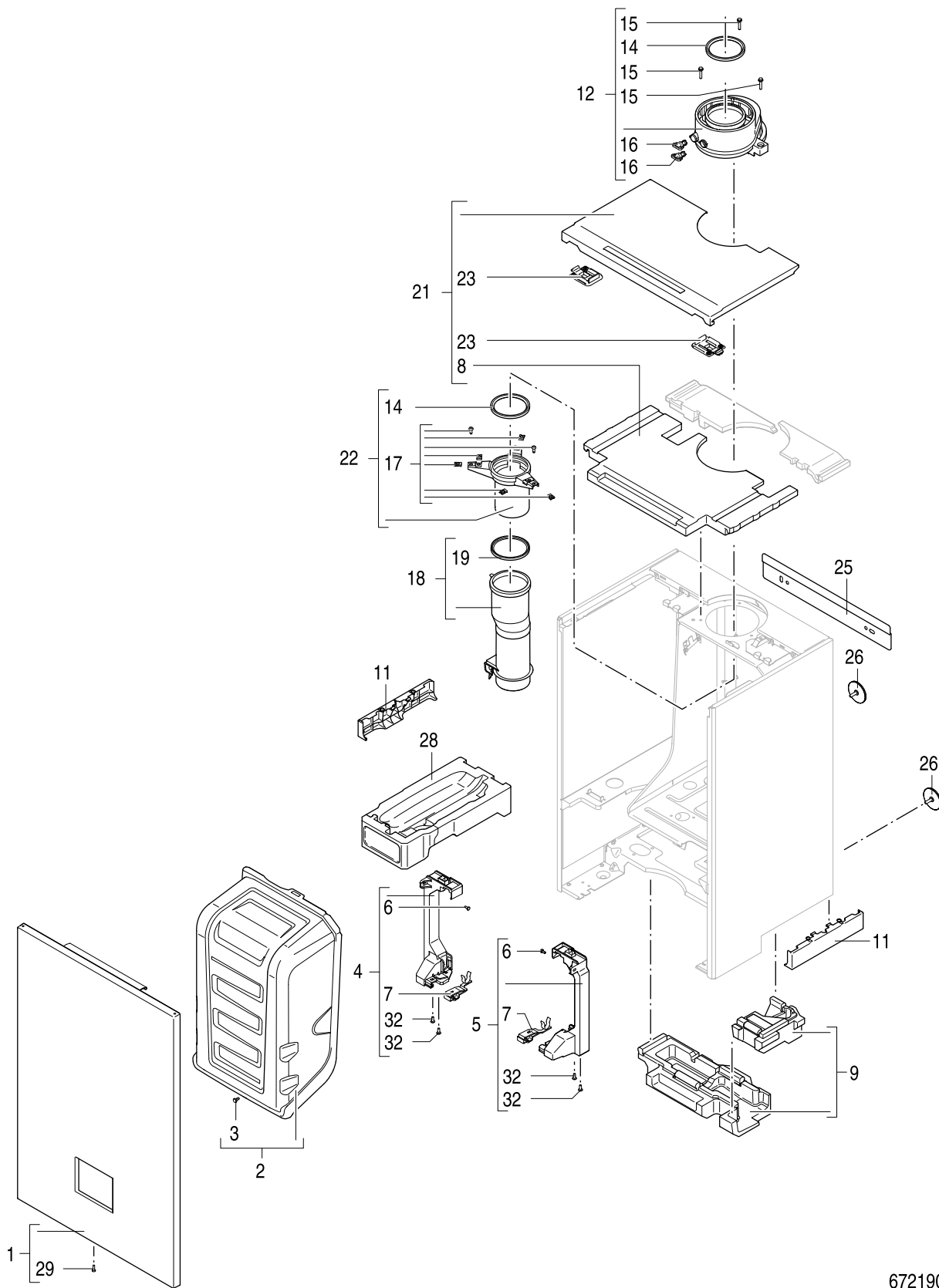
**[fa] تذکرات مهم درباره نصب/مونتاژ**  
نصب/مونتاژ باید توسط فردی حرفه ای که مجاز به انجام این کار است، و همچنین با توجه کامل به مقررات مربوطه انجام شود.

**[az] Quraşdırılma**

Quraşdırılma işinin yerinə yetirilməsi səlahiyyətli bir mütəxəssis tərəfindən və müvafiq qaydalara uyğun olaraq aparılmalıdır.

Ersatzteilliste  
Spare parts list

Liste des pièces de rechange  
Lista parti di ricambio



6721904160.aa

**1**  
Gehäuse  
Casing  
Carter  
Involucro

**GB192i.2 15-50 / GB192i.2-30 T40S  
GBH192i.2 15-35**

| Pos | Bezeichnung<br>Description<br>Dénomination<br>Descrizioni |                 | 7-736-702-058 | 7-736-702-059 | 7-736-702-060 | 7-736-702-061 | 7-736-702-062 | 7-736-702-063 | 7-736-702-064 | 7-736-702-065 | 7-736-702-066 | 7-736-702-067 |  |  |  |  |  |  | Bemerkungen<br>Remarks<br>Remarques<br>Osservazioni |
|-----|---|-----------------|---------------|---------------|---------------|---------------|---------------|---------------|---------------|---------------|---------------|---------------|--|--|--|--|--|--|---|
| 1   | Frontabdeckung Buderus (weiß)                             | 8 738 739 058   | ■             | ■             |               | ■             |               |               |               |               | ■             | ■             |  |  |  |  |  |  |   |
| 1   | Frontabdeckung Buderus (schwarz)                          | 8 738 739 059   |               | ■             | ■             |               | ■             | ■             | ■             | ■             |               |               |  |  |  |  |  |  |   |
| 2   | Luftkasten  | 8 737 711 177   | ■             | ■             | ■             | ■             | ■             | ■             | ■             | ■             | ■             | ■             |  |  |  |  |  |  |   |
| 3   | Schraube M5X12 Pozi                                       | 8 713 401 088 0 | ■             | ■             | ■             | ■             | ■             | ■             | ■             | ■             | ■             | ■             |  |  |  |  |  |  |   |
| 4   | Halterung (links)   | 8 738 739 060   | ■             | ■             | ■             | ■             | ■             | ■             | ■             | ■             | ■             | ■             |  |  |  |  |  |  |   |
| 5   | Halterung (rechts)  | 8 738 739 061   | ■             | ■             | ■             | ■             | ■             | ■             | ■             | ■             | ■             | ■             |  |  |  |  |  |  |   |
| 6   | Schraube 4,8x13 DIN7981 (10x)                             | 2 910 612 432 0 | ■             | ■             | ■             | ■             | ■             | ■             | ■             | ■             | ■             | ■             |  |  |  |  |  |  |   |
| 7   | Verbindungselement  | 8 737 709 146   | ■             | ■             | ■             | ■             | ■             | ■             | ■             | ■             | ■             | ■             |  |  |  |  |  |  |   |
| 8   | Isolierung (vorne)  | 8 738 739 065   | ■             | ■             | ■             | ■             | ■             | ■             | ■             | ■             | ■             | ■             |  |  |  |  |  |  |   |
| 9   | Isolierung (unten)  | 8 738 739 066   | ■             | ■             | ■             | ■             | ■             | ■             | ■             | ■             | ■             | ■             |  |  |  |  |  |  |   |
| 11  | Abdeckung (1x)  | 8 738 903 672   | ■             | ■             | ■             | ■             | ■             | ■             | ■             | ■             | ■             | ■             |  |  |  |  |  |  |   |
| 12  | Kesselanschlussstück DN 80/125                            | 8 738 903 673   | ■             | ■             | ■             | ■             | ■             | ■             | ■             | ■             | ■             | ■             |  |  |  |  |  |  |   |
| 14  | Lippendichtung DN80                                       | 8 738 901 447   | ■             | ■             | ■             | ■             | ■             | ■             | ■             | ■             | ■             | ■             |  |  |  |  |  |  |   |
| 15  | Schraube 4,8x25   | 8 738 903 674   | ■             | ■             | ■             | ■             | ■             | ■             | ■             | ■             | ■             | ■             |  |  |  |  |  |  |   |
| 16  | Stopfen   | 7 736 701 584   | ■             | ■             | ■             | ■             | ■             | ■             | ■             | ■             | ■             | ■             |  |  |  |  |  |  |   |
| 17  | Schnappmutter + Schraube 4,8x13 (2x)                      | 7 736 700 690   | ■             | ■             | ■             | ■             | ■             | ■             | ■             | ■             | ■             | ■             |  |  |  |  |  |  |   |
| 18  | Abgasrohr   | 8 718 666 183 0 | ■             | ■             | ■             | ■             | ■             | ■             | ■             | ■             | ■             | ■             |  |  |  |  |  |  |   |
| 18  | Abgasrohr   | 8 718 666 479 0 |               |               |               |               |               |               |               |               | ■             |               |  |  |  |  |  |  |   |
| 19  | Lippendichtung DN80                                       | 8 711 004 232 0 | ■             | ■             | ■             | ■             | ■             | ■             | ■             | ■             | ■             | ■             |  |  |  |  |  |  |   |
| 21  | Abdeckung oben  | 8 738 739 074   | ■             | ■             | ■             | ■             | ■             | ■             | ■             | ■             | ■             | ■             |  |  |  |  |  |  |   |
| 22  | Abgasstutzen  | 8 738 903 726   | ■             | ■             | ■             | ■             | ■             | ■             | ■             | ■             | ■             | ■             |  |  |  |  |  |  |   |
| 23  | Klammer   | 8 738 739 075   | ■             | ■             | ■             | ■             | ■             | ■             | ■             | ■             | ■             | ■             |  |  |  |  |  |  |   |
| 25  | Wandhalter  | 7 101 386       | ■             | ■             | ■             | ■             | ■             | ■             | ■             | ■             | ■             | ■             |  |  |  |  |  |  |   |
| 25  | Wandhalter  | 7 746 900 149   |               |               |               |               |               |               |               |               |               | ■             |  |  |  |  |  |  |   |
| 26  | Stellschraube (2x)  | 7 101 394       | ■             | ■             | ■             | ■             | ■             | ■             | ■             | ■             | ■             | ■             |  |  |  |  |  |  |   |
| 28  | Halterung (Ausdehnungsgefäß)                              | 8 738 903 675   | ■             | ■             | ■             | ■             | ■             | ■             | ■             | ■             | ■             | ■             |  |  |  |  |  |  |   |
| 29  | Schraube M5X12 (10x)                                      | 2 912 301 154 0 | ■             | ■             | ■             | ■             | ■             | ■             | ■             | ■             | ■             | ■             |  |  |  |  |  |  |   |
| 32  | Schraube B4x10-St-H                                       | 2 914 211 302 0 | ■             | ■             | ■             | ■             | ■             | ■             | ■             | ■             | ■             | ■             |  |  |  |  |  |  |   |

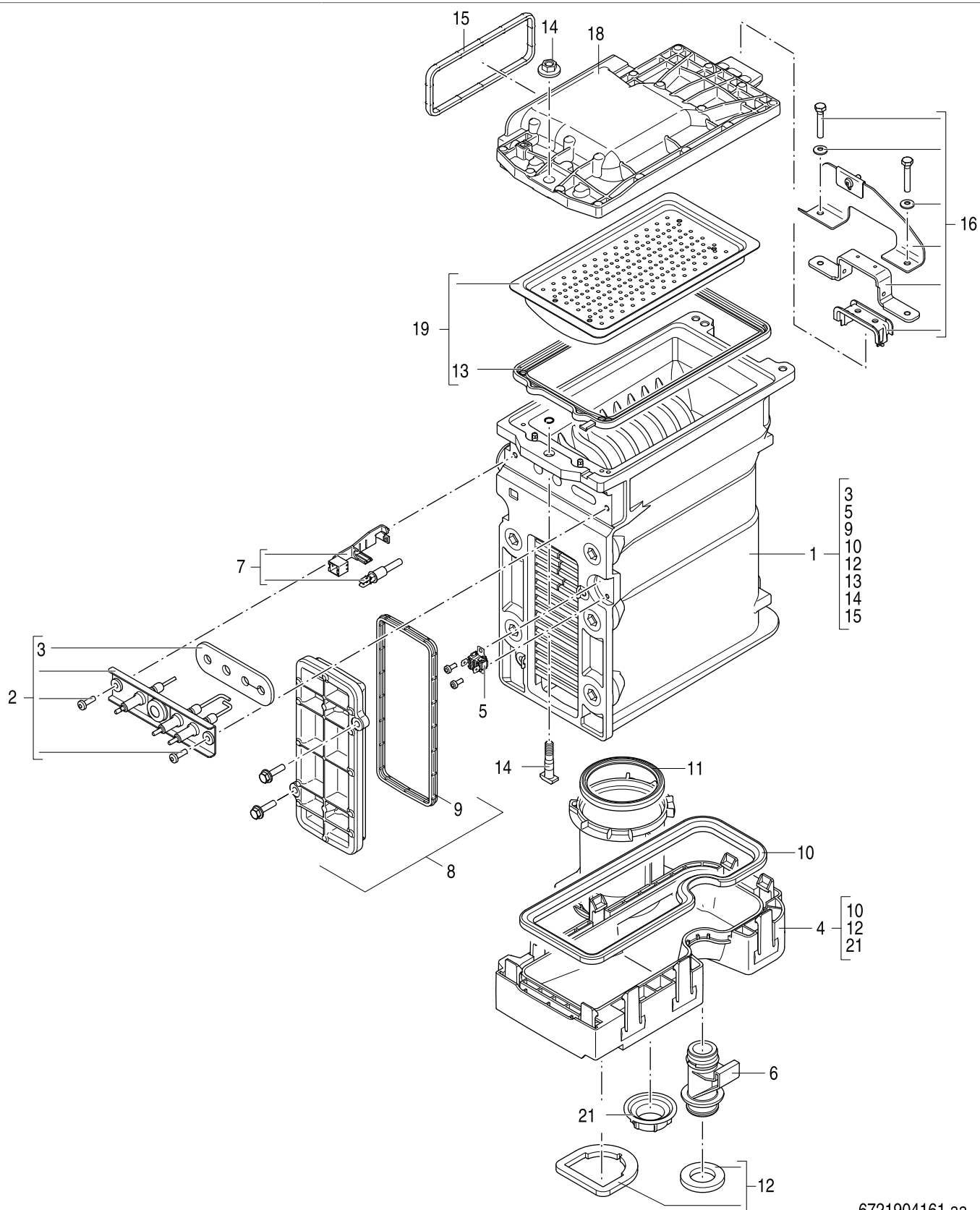
**GB192i.2 15-50 / GB192i.2-30 T40S**  
**GBH192i.2 15-35**

Gehäuse  
Casing  
Carter  
Involucro

**1**

Ersatzteilliste  
Spare parts list

Liste des pièces de rechange  
Lista parti di ricambio



6721904161.aa

**2**

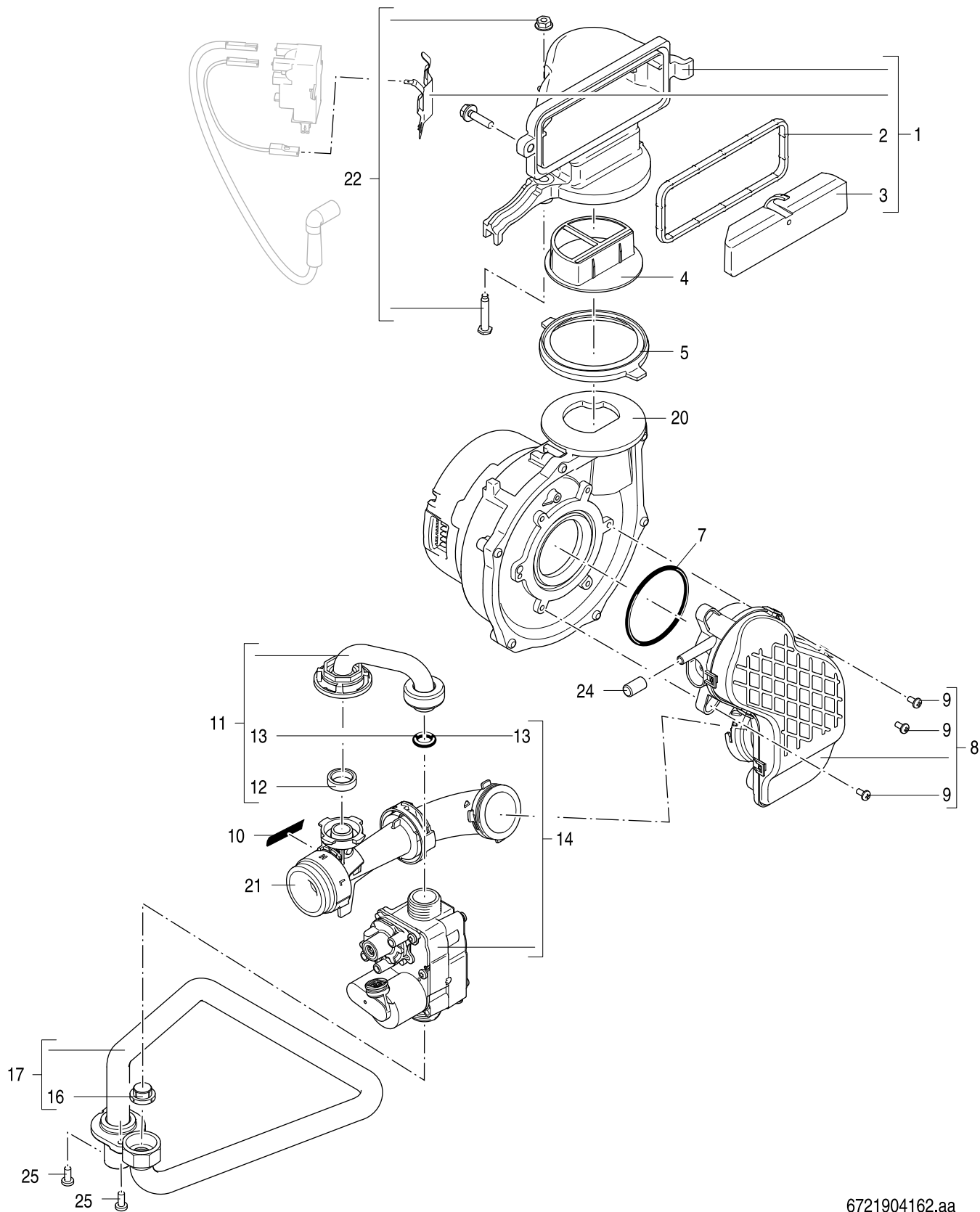
Wärmetauscher  
Heat exchanger  
Échangeur thermique  
Scambiatore di calore

**GB192i.2 15-50 / GB192i.2-30 T40S  
GBH192i.2 15-35**



Ersatzteilliste  
Spare parts list

Liste des pièces de rechange  
Lista parti di ricambio



6721904162.aa

**3**  
Gasarmatur  
Gas valve  
Bloc gaz  
Valvola del gas

**GB192i.2 15-50 / GB192i.2-30 T40S**  
**GBH192i.2 15-35**



| Pos | Bezeichnung<br>Description<br>Dénomination<br>Descrizioni |                 | 7-736-702-058 | 7-736-702-059 | 7-736-702-060 | 7-736-702-061 | 7-736-702-062 | 7-736-702-063 | 7-736-702-064 | 7-736-702-065 | 7-736-702-066 | 7-736-702-067 |  |  |  |  |  |  | Bemerkungen<br>Remarks<br>Remarques<br>Osservazioni |
|-----|---|-----------------|---------------|---------------|---------------|---------------|---------------|---------------|---------------|---------------|---------------|---------------|--|--|--|--|--|--|---|
| 1   | Gas-Luft-Kanal WB5-II+                                    | 8 737 714 115   | ■             | ■             | ■             | ■             | ■             | ■             | ■             | ■             | ■             | ■             |  |  |  |  |  |  |   |
| 1   | Gas-Luft-Kanal WB5-IV                                     | 8 737 714 116   |               |               |               |               |               |               |               |               | ■             | ■             |  |  |  |  |  |  |   |
| 2   | Dichtung (Gas-Luft-Kanal)                                 | 8 737 701 451 0 | ■             | ■             | ■             | ■             | ■             | ■             | ■             | ■             | ■             | ■             |  |  |  |  |  |  |   |
| 3   | Schalldämpfer   | 8 718 666 152 0 | ■             | ■             | ■             | ■             | ■             | ■             | ■             | ■             | ■             | ■             |  |  |  |  |  |  |   |
| 4   | Rückströmsicherung  | 8 718 662 796 0 | ■             | ■             | ■             | ■             | ■             | ■             | ■             | ■             | ■             | ■             |  |  |  |  |  |  |   |
| 5   | Lippendichtung  | 8 737 709 314   | ■             | ■             | ■             | ■             | ■             | ■             | ■             | ■             | ■             | ■             |  |  |  |  |  |  |   |
| 7   | O-Ring 63x3 (10x)   | 8 722 880 175 0 | ■             | ■             | ■             | ■             | ■             | ■             | ■             | ■             | ■             | ■             |  |  |  |  |  |  |   |
| 8   | Mischeinheit  | 8 718 661 853 0 |               |               |               |               | ■             |               |               | ■             |               | ■             |  |  |  |  |  |  |   |
| 8   | Mischeinheit  | 8 718 662 518 0 | ■             | ■             | ■             |               |               | ■             | ■             |               |               |               |  |  |  |  |  |  |   |
| 8   | Mischeinheit  | 8 718 662 522 0 |               |               |               |               |               |               |               |               | ■             |               |  |  |  |  |  |  |   |
| 9   | Schraube M4x8   | 2 914 411 412 0 | ■             | ■             | ■             | ■             | ■             | ■             | ■             | ■             | ■             | ■             |  |  |  |  |  |  |   |
| 10  | Sicherheitssiegel (Venturi) (10x)                         | 8 737 708 988   | ■             | ■             | ■             | ■             | ■             | ■             | ■             | ■             | ■             | ■             |  |  |  |  |  |  |   |
| 11  | Gasrohr   | 8 718 668 531 0 | ■             | ■             | ■             | ■             | ■             | ■             | ■             | ■             | ■             | ■             |  |  |  |  |  |  |   |
| 12  | Dichtung (10x)  | 8 718 662 055 0 | ■             | ■             | ■             | ■             | ■             | ■             | ■             | ■             | ■             | ■             |  |  |  |  |  |  |   |
| 13  | O-Ring 12x3 (10x)   | 8 718 669 385 0 | ■             | ■             | ■             | ■             | ■             | ■             | ■             | ■             | ■             | ■             |  |  |  |  |  |  |   |
| 14  | Gasarmatur  | 8 718 651 802 0 | ■             | ■             | ■             | ■             | ■             | ■             | ■             | ■             | ■             | ■             |  |  |  |  |  |  |   |
| 16  | Dichtung  | 8 718 600 34A 0 | ■             | ■             | ■             | ■             | ■             | ■             | ■             | ■             | ■             | ■             |  |  |  |  |  |  |   |
| 17  | Gasrohr   | 8 738 903 676   | ■             | ■             | ■             | ■             | ■             | ■             | ■             | ■             |               | ■             |  |  |  |  |  |  |   |
| 17  | Gasrohr   | 8 738 903 677   |               |               |               |               |               |               |               |               | ■             |               |  |  |  |  |  |  |   |
| 20  | Gebälse   | 8 737 709 295   | ■             | ■             | ■             | ■             | ■             | ■             | ■             | ■             | ■             | ■             |  |  |  |  |  |  |   |
| 21  | Venturi   | 8 737 708 864   | ■             | ■             |               |               | ■             |               |               |               |               |               |  |  |  |  |  |  |   |
| 21  | Venturi   | 8 737 708 865   |               |               | ■             | ■             |               |               | ■             |               |               |               |  |  |  |  |  |  |   |
| 21  | Venturi   | 8 737 708 866   |               |               |               |               | ■             |               |               | ■             |               | ■             |  |  |  |  |  |  |   |
| 21  | Venturi   | 8 737 708 867   |               |               |               |               |               |               |               |               | ■             |               |  |  |  |  |  |  |   |
| 22  | Mutter M6 + Schraube M6x30-5.8                            | 8 737 709 304   | ■             | ■             | ■             | ■             | ■             | ■             | ■             | ■             | ■             | ■             |  |  |  |  |  |  |   |
| 24  | Kappe   | 8 716 121 250   | ■             | ■             | ■             | ■             | ■             | ■             | ■             | ■             | ■             | ■             |  |  |  |  |  |  |   |
| 25  | Schraube M5x12 (10x)                                      | 7 736 700 351   | ■             | ■             | ■             | ■             | ■             | ■             | ■             | ■             | ■             | ■             |  |  |  |  |  |  |   |

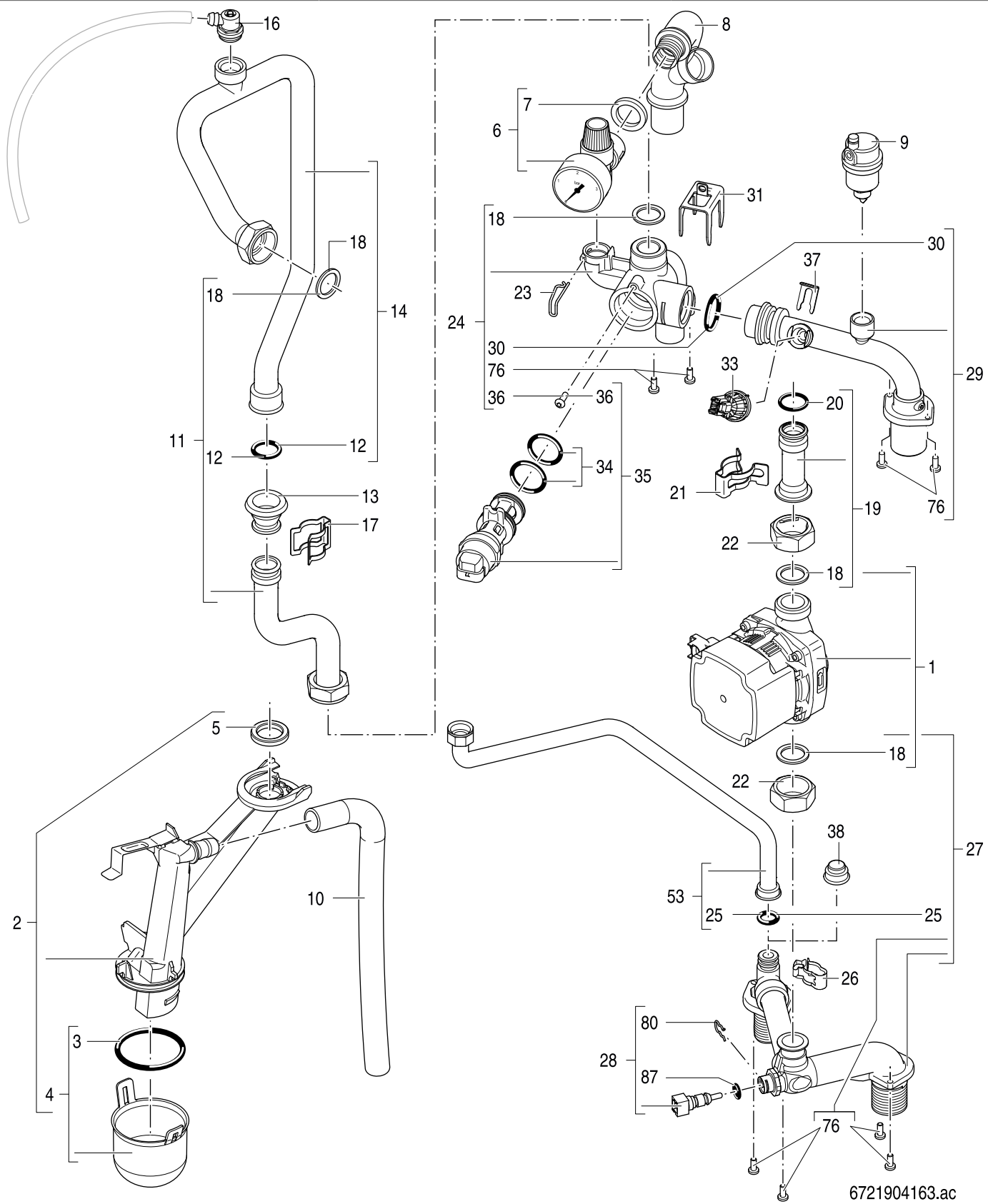
**GB192i.2 15-50 / GB192i.2-30 T40S**  
**GBH192i.2 15-35**

Gasarmatur  
Gas valve  
Bloc gaz  
Valvola del gas

**3**

**Ersatzteilliste**  
**Spare parts list**

**Liste des pièces de rechange**  
**Lista parti di ricambio**



6721904163.ac

Hydraulik U03-10 System  
Hydraulics U03-10 System  
Hydraulique U03-10 System  
Idraulica U03-10 System

**GB192i.2 15-50 / GB192i.2-30 T40S**  
**GBH192i.2 15-35**

**4A**

| Pos | Bezeichnung<br>Description<br>Dénomination<br>Descrizioni |                 | 7-736-702-058 | 7-736-702-059 | 7-736-702-060 | 7-736-702-061 | 7-736-702-062 | 7-736-702-063 | 7-736-702-064 | 7-736-702-065 | 7-736-702-066 | 7-736-702-067 | Bemerkungen<br>Remarks<br>Remarques<br>Osservazioni |
|-----|---|-----------------|---------------|---------------|---------------|---------------|---------------|---------------|---------------|---------------|---------------|---------------|---|
| 1   | Pumpe UPM3 ErP  | 8 737 604 157   | ■             | ■             | ■             | ■             | ■             |               |               |               |               | ■             |   |
| 2   | Siphon  | 8 710 506 271 0 | ■             | ■             | ■             | ■             | ■             |               |               |               |               | ■             |   |
| 3   | Dichtungs-Set (10x)                                       | 8 710 103 154 0 | ■             | ■             | ■             | ■             | ■             |               |               |               |               | ■             |   |
| 4   | Deckel  | 8 710 506 273 0 | ■             | ■             | ■             | ■             | ■             |               |               |               |               | ■             |   |
| 5   | Dichtung  | 8 718 669 366 0 | ■             | ■             | ■             | ■             | ■             |               |               |               |               | ■             |   |
| 6   | Sicherheitsventil + Manometer                             | 7 099 030       | ■             | ■             | ■             | ■             | ■             |               |               |               |               | ■             |   |
| 7   | Dichtung (5x)   | 7 363 8S        | ■             | ■             | ■             | ■             | ■             |               |               |               |               | ■             |   |
| 8   | Ablaufrohr  | 8 738 903 687   | ■             | ■             | ■             | ■             | ■             |               |               |               |               | ■             |   |
| 9   | Entlüfter   | 8 718 642 780 0 | ■             | ■             | ■             | ■             | ■             |               |               |               |               | ■             |   |
| 10  | Ablaufschlauch  | 7 736 700 693   | ■             | ■             | ■             | ■             | ■             |               |               |               |               | ■             |   |
| 11  | Vorlaufrohr (unten) 15-35 kW                              | 8 738 903 678   | ■             | ■             | ■             | ■             | ■             |               |               |               |               | ■             |   |
| 12  | O-Ring 20,22x3,53 EPDM (10x)                              | 8 718 685 490 0 | ■             | ■             | ■             | ■             | ■             |               |               |               |               | ■             |   |
| 13  | Tülle   | 8 738 903 679   | ■             | ■             | ■             | ■             | ■             |               |               |               |               | ■             |   |
| 14  | Vorlaufrohr (oben) 15-35 kW                               | 8 738 903 680   | ■             | ■             | ■             | ■             | ■             |               |               |               |               | ■             |   |
| 16  | Entlüfter   | 8 717 405 285 0 | ■             | ■             | ■             | ■             | ■             |               |               |               |               | ■             |   |
| 17  | Klammer   | 7 736 700 698   | ■             | ■             | ■             | ■             | ■             |               |               |               |               | ■             |   |
| 18  | Dichtung 22,2x30x2  | 8 737 709 162   | ■             | ■             | ■             | ■             | ■             |               |               |               |               | ■             |   |
| 19  | Rücklaufrohr  | 8 738 903 681   | ■             | ■             | ■             | ■             | ■             |               |               |               |               | ■             |   |
| 20  | O-Ring 17x4 (10x)   | 8 716 771 154 0 | ■             | ■             | ■             | ■             | ■             |               |               |               |               | ■             |   |
| 21  | Klammer (10x)   | 8 711 200 024 0 | ■             | ■             | ■             | ■             | ■             |               |               |               |               | ■             |   |
| 22  | Überwurfmutter  | 7 099 416       | ■             | ■             | ■             | ■             | ■             |               |               |               |               | ■             |   |
| 23  | Haltefeder  | 7 736 700 702   | ■             | ■             | ■             | ■             | ■             |               |               |               |               | ■             |   |
| 24  | Gehäuse (3-Wege-Ventil)                                   | 8 737 604 762   | ■             | ■             | ■             | ■             | ■             |               |               |               |               | ■             |   |
| 25  | O-Ring 14,48x2,62 (10x)                                   | 7 099 167       | ■             | ■             | ■             | ■             | ■             |               |               |               |               | ■             |   |
| 26  | Klammer (5x)  | 7 099 438       | ■             | ■             | ■             | ■             | ■             |               |               |               |               | ■             |   |
| 27  | Anschlussstück Rücklauf                                   | 8 737 604 763   | ■             | ■             | ■             | ■             | ■             |               |               |               |               | ■             |   |
| 28  | Temperaturfühler  | 8 714 500 081 0 | ■             | ■             | ■             | ■             | ■             |               |               |               |               | ■             |   |
| 29  | Vorlaufrohr 15-35 kW                                      | 8 737 604 764   | ■             | ■             | ■             | ■             | ■             |               |               |               |               | ■             |   |
| 30  | O-Ring 3,53x29,74 (10x)                                   | 8 738 903 138   | ■             | ■             | ■             | ■             | ■             |               |               |               |               | ■             |   |
| 31  | Klammer (2x)  | 7 456 5         | ■             | ■             | ■             | ■             | ■             |               |               |               |               | ■             |   |
| 33  | Druckfühler   | 8 718 651 042 0 | ■             | ■             | ■             | ■             | ■             |               |               |               |               | ■             |   |
| 34  | O-Ring  | 7 746 900 280   | ■             | ■             | ■             | ■             | ■             |               |               |               |               | ■             |   |
| 35  | 3-Wege-Ventil (15-45kW)                                   | 8 718 600 137   | ■             | ■             | ■             | ■             | ■             |               |               |               |               | ■             |   |
| 36  | Schraube M5x16 (5x)                                       | 7 746 900 310   | ■             | ■             | ■             | ■             | ■             |               |               |               |               | ■             |   |
| 37  | Sicherungsklammer   | 7 101 370       | ■             | ■             | ■             | ■             | ■             |               |               |               |               | ■             |   |
| 38  | Stopfen   | 7 099 028       | ■             | ■             | ■             | ■             | ■             |               |               |               |               | ■             |   |
| 53  | Keine Ersatzteile verfügbar                               | 8 710 000 000 0 | ■             | ■             | ■             | ■             | ■             |               |               |               |               | ■             |   |
| 76  | Schraube M5x12 (10x)                                      | 7 736 700 351   | ■             | ■             | ■             | ■             | ■             |               |               |               |               | ■             |   |
| 80  | Haltefeder 10mm (10x)                                     | 8 716 771 167 0 | ■             | ■             | ■             | ■             | ■             |               |               |               |               | ■             |   |
| 87  | O-Ring 7,75x2,1 (10x)                                     | 8 710 205 080 0 | ■             | ■             | ■             | ■             | ■             |               |               |               |               | ■             |   |

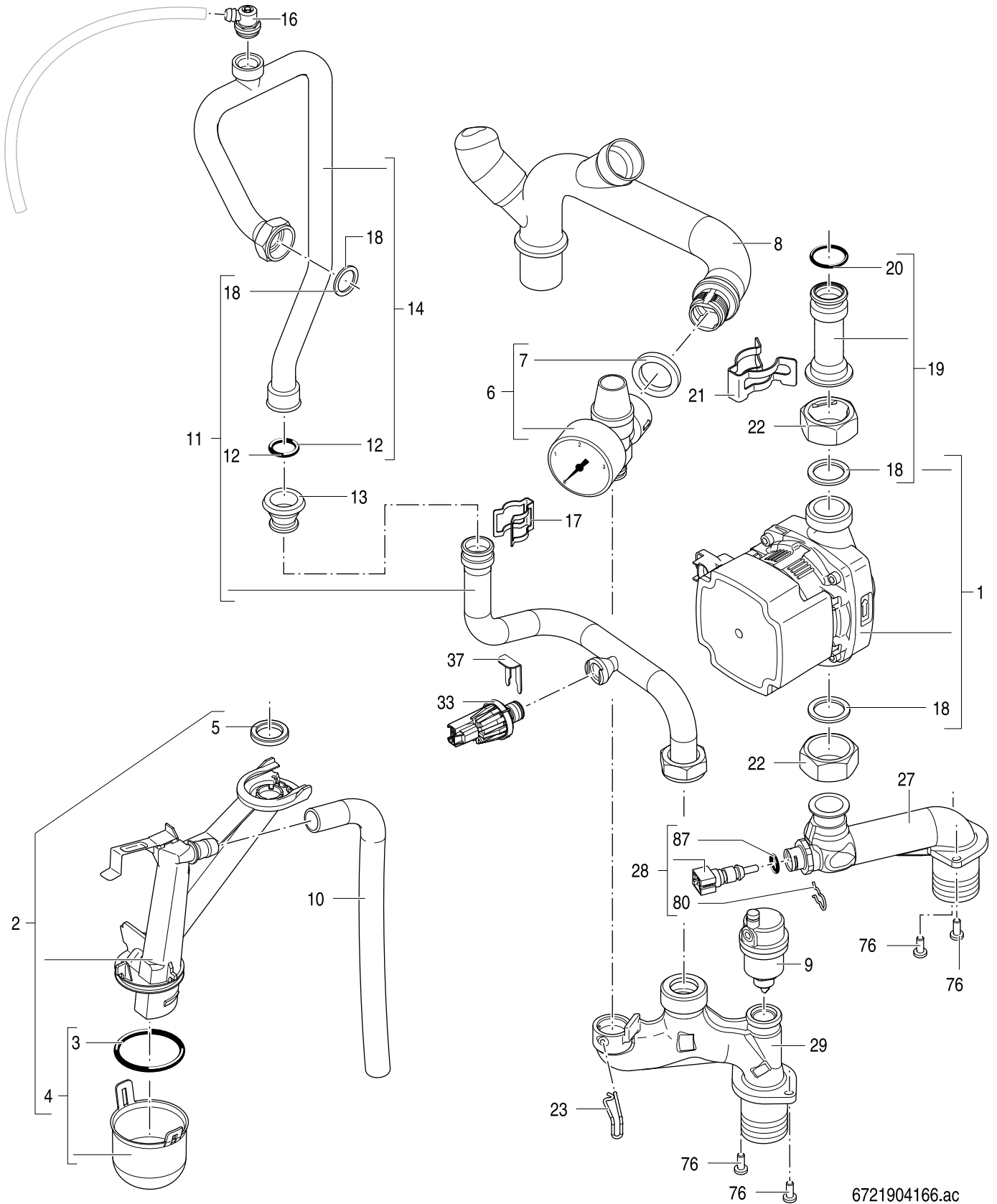
**GB192i.2 15-50 / GB192i.2-30 T40S**  
**GBH192i.2 15-35**

Hydraulik U03-10 System  
Hydraulics U03-10 System  
Hydraulique U03-10 System  
Idraulica U03-10 System

**4A**

**Ersatzteilliste**  
**Spare parts list**

**Liste des pièces de rechange**  
**Lista parti di ricambio**



6721904166.ac

**4B**

Hydraulik U03-10 Heating only  
 Hydraulics U03-10 Heating only  
 Hydraulique U03-10 Heating only  
 Idraulica U03-10 Heating only

**GB192i.2 15-50 / GB192i.2-30 T40S**  
**GBH192i.2 15-35**

| Pos | Bezeichnung<br>Description<br>Dénomination<br>Descrizioni |                 |  |  |  |  |  |  |  |  |  |  |  |  |  |  |  |  |  | Bemerkungen<br>Remarks<br>Remarques<br>Osservazioni |
|-----|---|-----------------|--|--|--|--|--|--|--|--|--|--|--|--|--|--|--|--|--|---|
|     |   |                 |  |  |  |  |  |  |  |  |  |  |  |  |  |  |  |  |  |   |
| 1   | Pumpe UPM4L 75W ErP1 (Gusseisen)                          | 8 737 605 870   |  |  |  |  |  |  |  |  |  |  |  |  |  |  |  |  |  |   |
| 2   | Siphon  | 8 710 506 271 0 |  |  |  |  |  |  |  |  |  |  |  |  |  |  |  |  |  |   |
| 3   | Dichtungs-Set (10x)                                       | 8 710 103 154 0 |  |  |  |  |  |  |  |  |  |  |  |  |  |  |  |  |  |   |
| 4   | Deckel  | 8 710 506 273 0 |  |  |  |  |  |  |  |  |  |  |  |  |  |  |  |  |  |   |
| 5   | Dichtung  | 8 718 669 366 0 |  |  |  |  |  |  |  |  |  |  |  |  |  |  |  |  |  |   |
| 6   | Sicherheitsventil + Manometer                             | 7 099 030       |  |  |  |  |  |  |  |  |  |  |  |  |  |  |  |  |  |   |
| 7   | Dichtung (5x)   | 7 363 8S        |  |  |  |  |  |  |  |  |  |  |  |  |  |  |  |  |  |   |
| 8   | Ablaufrohr  | 8 738 903 684   |  |  |  |  |  |  |  |  |  |  |  |  |  |  |  |  |  |   |
| 9   | Entlüfter   | 8 718 642 780 0 |  |  |  |  |  |  |  |  |  |  |  |  |  |  |  |  |  |   |
| 10  | Ablaufschlauch  | 7 736 700 693   |  |  |  |  |  |  |  |  |  |  |  |  |  |  |  |  |  |   |
| 11  | Vorlaufrohr (unten) 50 kW                                 | 8 738 903 685   |  |  |  |  |  |  |  |  |  |  |  |  |  |  |  |  |  |   |
| 12  | O-Ring 20,22x3,53 EPDM (10x)                              | 8 718 685 490 0 |  |  |  |  |  |  |  |  |  |  |  |  |  |  |  |  |  |   |
| 13  | Tülle   | 8 738 903 679   |  |  |  |  |  |  |  |  |  |  |  |  |  |  |  |  |  |   |
| 14  | Vorlaufrohr (oben) 50 kW                                  | 8 738 903 686   |  |  |  |  |  |  |  |  |  |  |  |  |  |  |  |  |  |   |
| 16  | Entlüfter   | 8 717 405 285 0 |  |  |  |  |  |  |  |  |  |  |  |  |  |  |  |  |  |   |
| 17  | Klammer   | 7 736 700 698   |  |  |  |  |  |  |  |  |  |  |  |  |  |  |  |  |  |   |
| 18  | Dichtung 22,2x30x2  | 8 737 709 162   |  |  |  |  |  |  |  |  |  |  |  |  |  |  |  |  |  |   |
| 19  | Rücklaufrohr  | 8 738 903 681   |  |  |  |  |  |  |  |  |  |  |  |  |  |  |  |  |  |   |
| 20  | O-Ring 17x4 (10x)   | 8 716 771 154 0 |  |  |  |  |  |  |  |  |  |  |  |  |  |  |  |  |  |   |
| 21  | Klammer (10x)   | 8 711 200 024 0 |  |  |  |  |  |  |  |  |  |  |  |  |  |  |  |  |  |   |
| 22  | Überwurfmutter  | 7 099 416       |  |  |  |  |  |  |  |  |  |  |  |  |  |  |  |  |  |   |
| 23  | Haltefeder  | 7 736 700 702   |  |  |  |  |  |  |  |  |  |  |  |  |  |  |  |  |  |   |
| 27  | Rücklaufrohr 50 kW  | 8 737 604 765   |  |  |  |  |  |  |  |  |  |  |  |  |  |  |  |  |  |   |
| 28  | Temperaturfühler  | 8 714 500 081 0 |  |  |  |  |  |  |  |  |  |  |  |  |  |  |  |  |  |   |
| 29  | Anschlussstück Vorlauf                                    | 8 737 604 766   |  |  |  |  |  |  |  |  |  |  |  |  |  |  |  |  |  |   |
| 33  | Druckfühler   | 8 718 651 042 0 |  |  |  |  |  |  |  |  |  |  |  |  |  |  |  |  |  |   |
| 37  | Sicherungsklammer   | 7 101 370       |  |  |  |  |  |  |  |  |  |  |  |  |  |  |  |  |  |   |
| 76  | Schraube M5x12 (10x)                                      | 7 736 700 351   |  |  |  |  |  |  |  |  |  |  |  |  |  |  |  |  |  |   |
| 80  | Haltefeder 10mm (10x)                                     | 8 716 771 167 0 |  |  |  |  |  |  |  |  |  |  |  |  |  |  |  |  |  |   |
| 87  | O-Ring 7,75x2,1 (10x)                                     | 8 710 205 080 0 |  |  |  |  |  |  |  |  |  |  |  |  |  |  |  |  |  |   |

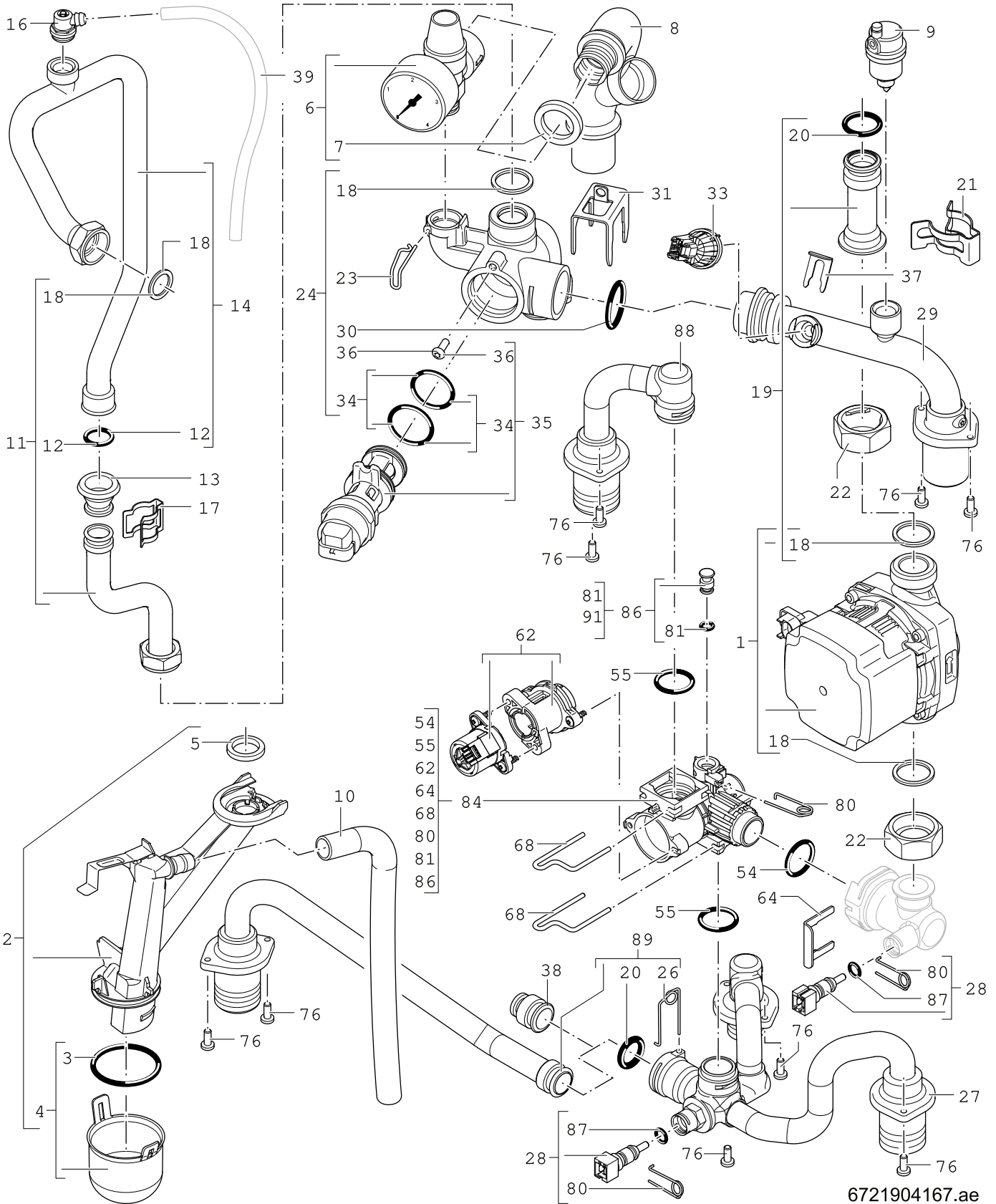
**GB192i.2 15-50 / GB192i.2-30 T40S**  
**GBH192i.2 15-35**

Hydraulik U03-10 Heating only  
Hydraulics U03-10 Heating only  
Hydraulique U03-10 Heating only  
Idraulica U03-10 Heating only

**4B**

**Ersatzteilliste**  
**Spare parts list**

**Liste des pièces de rechange**  
**Lista parti di ricambio**



6721904167.ae

**4C**

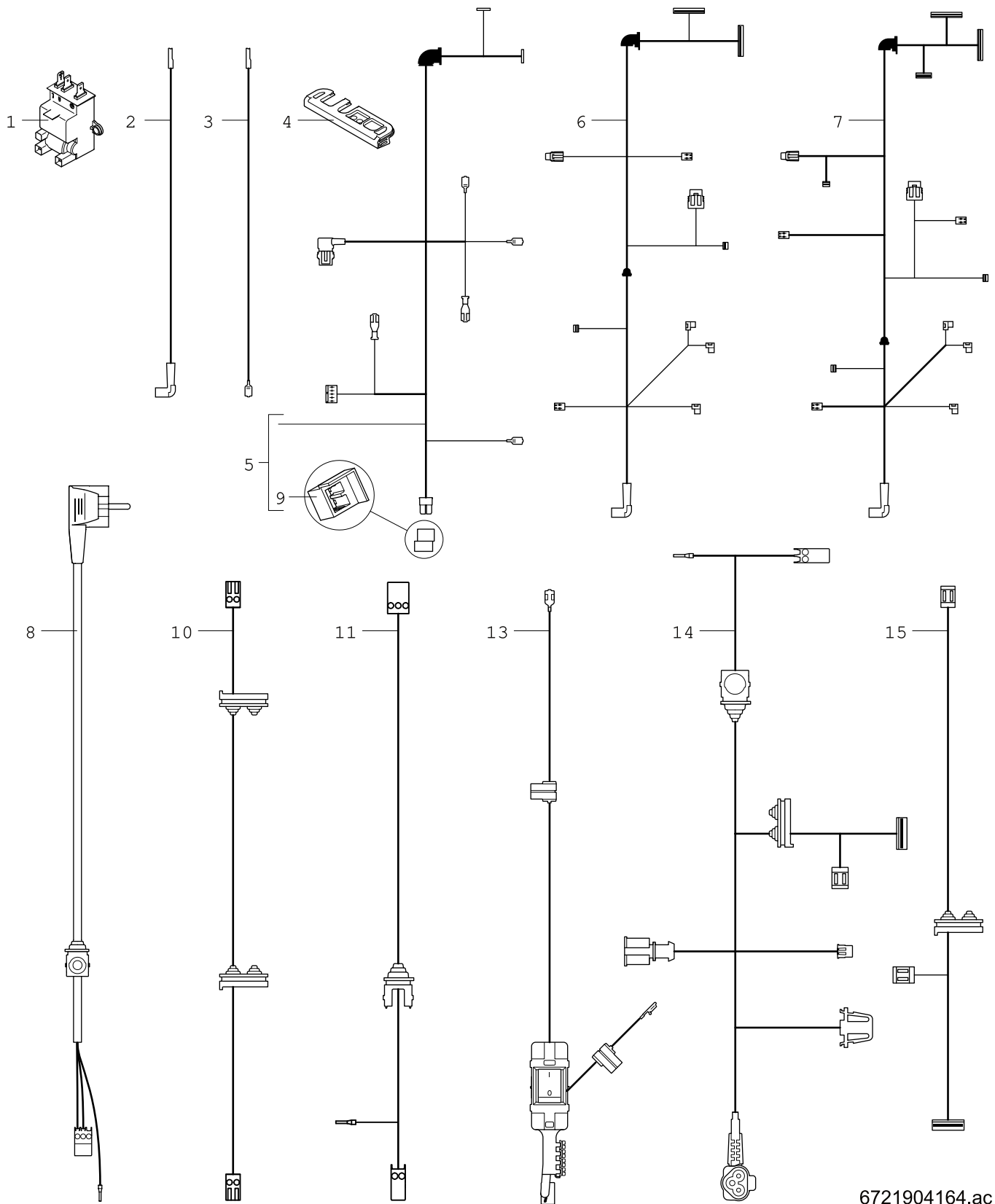
Hydraulik U03-50 RR-System  
Hydraulics U03-50 RR-System  
Hydraulique U03-50 RR-System  
Idraulica U03-50 RR-System

**GB192i.2 15-50 / GB192i.2-30 T40S**  
**GBH192i.2 15-35**

| Pos                                      | Bezeichnung<br>Description<br>Dénomination<br>Descrizioni |                 |               |               |               |               |               |               |               |               |               |               |  |                              |  |  | Bemerkungen<br>Remarks<br>Remarques<br>Osservazioni |           |
|--|---|-----------------|---------------|---------------|---------------|---------------|---------------|---------------|---------------|---------------|---------------|---------------|--|------------------------------|--|--|---|-----------|
|  |   |                 | 7-736-702-068 | 7-736-702-069 | 7-736-702-060 | 7-736-702-061 | 7-736-702-062 | 7-736-702-063 | 7-736-702-064 | 7-736-702-065 | 7-736-702-066 | 7-736-702-067 |  |                              |  |  |   |           |
| 1  | Pumpe UPM3 ErP  | 8 737 604 157   |               |               |               |               |               | ■             | ■             |               |               |               |  |                              |  |  |   |           |
| 2  | Siphon  | 8 710 506 271 0 |               |               |               |               |               | ■             | ■             |               |               |               |  |                              |  |  |   |           |
| 3  | Dichtungs-Set (10x)                                       | 8 710 103 154 0 |               |               |               |               |               | ■             | ■             |               |               |               |  |                              |  |  |   |           |
| 4  | Deckel  | 8 710 506 273 0 |               |               |               |               |               | ■             | ■             |               |               |               |  |                              |  |  |   |           |
| 5  | Dichtung  | 8 718 669 366 0 |               |               |               |               |               | ■             | ■             |               |               |               |  |                              |  |  |   |           |
| 6  | Sicherheitsventil + Manometer                             | 7 099 030       |               |               |               |               |               | ■             | ■             |               |               |               |  |                              |  |  |   |           |
| 7  | Dichtung (5x)   | 7 363 8S        |               |               |               |               |               | ■             | ■             |               |               |               |  |                              |  |  |   |           |
| 8  | Ablaufrohr  | 8 738 903 687   |               |               |               |               |               | ■             | ■             |               |               |               |  |                              |  |  |   |           |
| 9  | Entlüfter   | 8 718 642 780 0 |               |               |               |               |               | ■             | ■             |               |               |               |  |                              |  |  |   |           |
| 10                                       | Ablaufschlauch  | 7 736 700 693   |               |               |               |               |               | ■             | ■             |               |               |               |  |                              |  |  |   |           |
| 11                                       | Vorlaufrohr (unten) 15-35 kW                              | 8 738 903 678   |               |               |               |               |               | ■             | ■             |               |               |               |  |                              |  |  |   |           |
| 12                                       | O-Ring 20,22x3,53 EPDM (10x)                              | 8 718 685 490 0 |               |               |               |               |               | ■             | ■             |               |               |               |  |                              |  |  |   |           |
| 13                                       | Tülle   | 8 738 903 679   |               |               |               |               |               | ■             | ■             |               |               |               |  |                              |  |  |   |           |
| 14                                       | Vorlaufrohr (oben) 15-35 kW                               | 8 738 903 680   |               |               |               |               |               | ■             | ■             |               |               |               |  |                              |  |  |   |           |
| 16                                       | Entlüfter   | 8 717 405 285 0 |               |               |               |               |               | ■             | ■             |               |               |               |  |                              |  |  |   |           |
| 17                                       | Klammer   | 7 736 700 698   |               |               |               |               |               | ■             | ■             |               |               |               |  |                              |  |  |   |           |
| 18                                       | Dichtung 22,2x30x2  | 8 737 709 162   |               |               |               |               |               | ■             | ■             |               |               |               |  |                              |  |  |   |           |
| 19                                       | Rücklaufrohr  | 8 738 903 681   |               |               |               |               |               | ■             | ■             |               |               |               |  |                              |  |  |   |           |
| 20                                       | O-Ring 17x4 (10x)   | 8 716 771 154 0 |               |               |               |               |               | ■             | ■             |               |               |               |  |                              |  |  |   |           |
| 21                                       | Klammer (10x)   | 8 711 200 024 0 |               |               |               |               |               | ■             | ■             |               |               |               |  |                              |  |  |   |           |
| 22                                       | Überwurfmutter  | 7 099 416       |               |               |               |               |               | ■             | ■             |               |               |               |  |                              |  |  |   |           |
| 23                                       | Haltefeder  | 7 736 700 702   |               |               |               |               |               | ■             | ■             |               |               |               |  |                              |  |  |   |           |
| 24                                       | Gehäuse (3-Wege-Ventil)                                   | 8 737 604 762   |               |               |               |               |               | ■             | ■             |               |               |               |  |                              |  |  |   |           |
| 26                                       | Haltefeder 18mm (10x)                                     | 8 718 684 699 0 |               |               |               |               |               | ■             | ■             |               |               |               |  |                              |  |  |   |           |
| 27                                       | Rücklaufrohr 15-35 kW                                     | 8 737 604 442   |               |               |               |               |               | ■             | ■             |               |               |               |  |                              |  |  |   |           |
| 28                                       | Temperaturfühler  | 8 714 500 081 0 |               |               |               |               |               | ■             | ■             |               |               |               |  |                              |  |  |   |           |
| 29                                       | Vorlaufrohr 15-35 kW                                      | 8 737 604 764   |               |               |               |               |               | ■             | ■             |               |               |               |  |                              |  |  |   |           |
| 30                                       | O-Ring 3,53x29,74 (10x)                                   | 8 738 903 138   |               |               |               |               |               | ■             | ■             |               |               |               |  |                              |  |  |   |           |
| 31                                       | Klammer (2x)  | 7 456 5         |               |               |               |               |               | ■             | ■             |               |               |               |  |                              |  |  |   |           |
| 33                                       | Druckfühler   | 8 718 651 042 0 |               |               |               |               |               | ■             | ■             |               |               |               |  |                              |  |  |   |           |
| 34                                       | O-Ring  | 7 746 900 280   |               |               |               |               |               | ■             | ■             |               |               |               |  |                              |  |  |   |           |
| 35                                       | 3-Wege-Ventil (15-45kW)                                   | 8 718 600 137   |               |               |               |               |               | ■             | ■             |               |               |               |  |                              |  |  |   |           |
| 36                                       | Schraube M5x16 (5x)                                       | 7 746 900 310   |               |               |               |               |               | ■             | ■             |               |               |               |  |                              |  |  |   |           |
| 37                                       | Sicherungsklammer   | 7 101 370       |               |               |               |               |               | ■             | ■             |               |               |               |  |                              |  |  |   |           |
| 38                                       | Stopfen 18mm  | 8 716 106 564 0 |               |               |               |               |               | ■             | ■             |               |               |               |  |                              |  |  |   |           |
| 54                                       | O-Ring 23x4 (10x)   | 8 716 771 353 0 |               |               |               |               |               | ■             | ■             |               |               |               |  |                              |  |  |   |           |
| 55                                       | O-Ring 23,47x2,62 (10x)                                   | 8 737 602 349   |               |               |               |               |               | ■             | ■             |               |               |               |  |                              |  |  |   |           |
| 62                                       | Motor (3-Wege-Ventil)                                     | 8 737 602 357   |               |               |               |               |               | ■             | ■             |               |               |               |  |                              |  |  |   |           |
| 64                                       | Sicherungsklammer (10x)                                   | 8 718 681 920 0 |               |               |               |               |               | ■             | ■             |               |               |               |  |                              |  |  |   |           |
| 68                                       | Haltefeder (10x)  | 8 737 602 355   |               |               |               |               |               | ■             | ■             |               |               |               |  |                              |  |  |   |           |
| 76                                       | Schraube M5x12 (10x)                                      | 7 736 700 351   |               |               |               |               |               | ■             | ■             |               |               |               |  |                              |  |  |   |           |
| 80                                       | Haltefeder 10mm (10x)                                     | 8 716 771 167 0 |               |               |               |               |               | ■             | ■             |               |               |               |  |                              |  |  |   |           |
| 81                                       | O-Ring 6x2,5 (10x)  | 8 716 771 164 0 |               |               |               |               |               | ■             | ■             |               |               |               |  |                              |  |  |   |           |
| 84                                       | Mischerventil   | 8 737 604 165   |               |               |               |               |               | ■             | ■             |               |               |               |  |                              |  |  |   |           |
| 86                                       | Stopfen 10mm  | 8 716 012 269 0 |               |               |               |               |               | ■             | ■             |               |               |               |  |                              |  |  |   |           |
| 87                                       | O-Ring 7,75x2,1 (10x)                                     | 8 710 205 080 0 |               |               |               |               |               | ■             | ■             |               |               |               |  |                              |  |  |   |           |
| 88                                       | Vorlaufrohr (Speicher RR/Gerät)                           | 8 737 604 443   |               |               |               |               |               | ■             | ■             |               |               |               |  |                              |  |  |   |           |
| 89                                       | Rücklaufrohr (extern)                                     | 8 737 604 167   |               |               |               |               |               | ■             | ■             |               |               |               |  |                              |  |  |   |           |
| 91                                       | Sicherungsklammer (10x)                                   | 8 719 905 335 0 |               |               |               |               |               | ■             | ■             |               |               |               |  |                              |  |  |   |           |
| <b>GB192i.2 15-50 / GB192i.2-30 T40S</b> |   |                 |               |               |               |               |               |               |               |               |               |               |  | Hydraulik U03-50 RR-System   |  |  |   | <b>4C</b> |
| <b>GBH192i.2 15-35</b>                   |   |                 |               |               |               |               |               |               |               |               |               |               |  | Hydraulics U03-50 RR-System  |  |  |   |           |
|  |   |                 |               |               |               |               |               |               |               |               |               |               |  | Hydraulique U03-50 RR-System |  |  |   |           |
|  |   |                 |               |               |               |               |               |               |               |               |               |               |  | Idraulica U03-50 RR-System   |  |  |   |           |

**Ersatzteilliste**  
**Spare parts list**

**Liste des pièces de rechange**  
**Lista parti di ricambio**



6721904164.ac

**5**

Kabelbaum  
Cable harness  
Faisceau de câbles  
Cablaggio

**GB192i.2 15-50 / GB192i.2-30 T40S**  
**GBH192i.2 15-35**

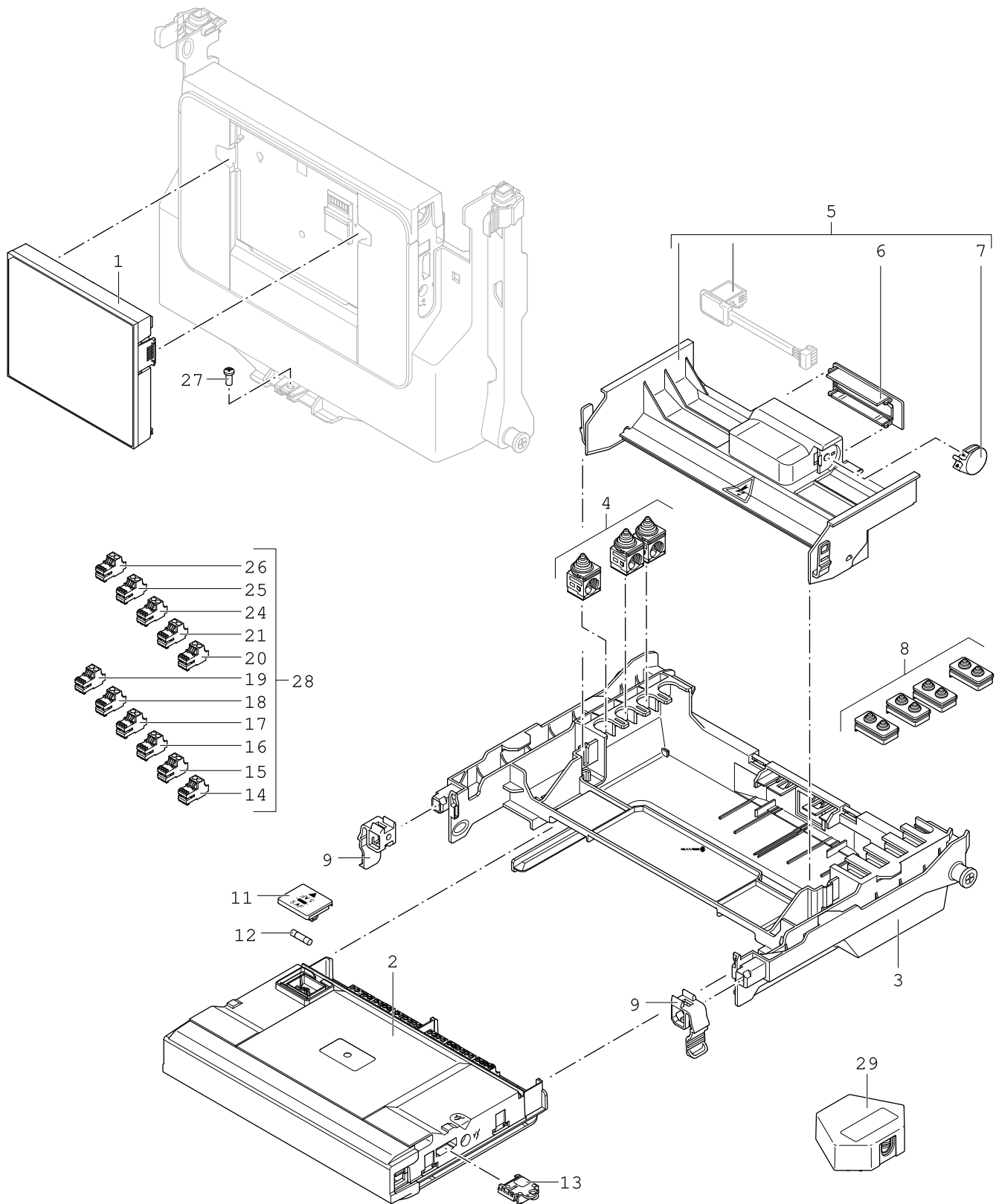


| Pos | Bezeichnung<br>Description<br>Dénomination<br>Descrizioni |               | 7-736-702-058 | 7-736-702-059 | 7-736-702-060 | 7-736-702-061 | 7-736-702-062 | 7-736-702-063 | 7-736-702-064 | 7-736-702-065 | 7-736-702-066 | 7-736-702-067 |  |  |  |  |  |  | Bemerkungen<br>Remarks<br>Remarques<br>Osservazioni |
|-----|---|---------------|---------------|---------------|---------------|---------------|---------------|---------------|---------------|---------------|---------------|---------------|--|--|--|--|--|--|---|
| 1   | Zündtrafo   | 7 736 700 599 | ■             | ■             | ■             | ■             | ■             | ■             | ■             | ■             | ■             | ■             |  |  |  |  |  |  |   |
| 2   | Zündleitung   | 8 737 712 818 | ■             | ■             | ■             | ■             | ■             | ■             | ■             | ■             | ■             | ■             |  |  |  |  |  |  |   |
| 3   | Masseleitung  | 8 737 712 819 | ■             | ■             | ■             | ■             | ■             | ■             | ■             | ■             | ■             | ■             |  |  |  |  |  |  |   |
| 4   | Tülle (Kabelführung)                                      | 8 737 710 236 | ■             | ■             | ■             | ■             | ■             | ■             | ■             | ■             | ■             | ■             |  |  |  |  |  |  |   |
| 5   | Kabelbaum HV  | 8 738 903 688 | ■             | ■             | ■             | ■             | ■             | ■             | ■             | ■             | ■             | ■             |  |  |  |  |  |  |   |
| 6   | Kabelbaum intern LV                                       | 8 738 903 689 | ■             | ■             | ■             | ■             |               |               |               |               | ■             | ■             |  |  |  |  |  |  |   |
| 7   | Kabelbaum intern LV                                       | 8 738 903 690 |               |               |               |               | ■             | ■             | ■             |               |               |               |  |  |  |  |  |  |   |
| 8   | Netzleitung   | 8 737 712 655 | ■             | ■             | ■             | ■             | ■             | ■             | ■             | ■             | ■             | ■             |  |  |  |  |  |  |   |
| 9   | Manschette  | 8 738 901 772 | ■             | ■             | ■             | ■             | ■             | ■             | ■             | ■             | ■             | ■             |  |  |  |  |  |  |   |
| 10  | Kabelbaum LV (Modulbox)                                   | 8 738 903 709 | ■             | ■             | ■             | ■             | ■             | ■             | ■             | ■             | ■             | ■             |  |  |  |  |  |  |   |
| 11  | Kabelbaum HV (Modulbox)                                   | 8 738 903 710 | ■             | ■             | ■             | ■             | ■             | ■             | ■             | ■             | ■             | ■             |  |  |  |  |  |  |   |
| 13  | Leitung + Schalter ON/OFF                                 | 8 737 711 282 | ■             | ■             | ■             | ■             | ■             | ■             | ■             | ■             | ■             | ■             |  |  |  |  |  |  |   |
| 14  | Kabelbaum (Speicher intern)                               | 8 738 903 691 |               |               |               |               |               |               |               |               | ■             |               |  |  |  |  |  |  |   |
| 15  | Kabel (Speicher extern)                                   | 8 738 903 692 |               |               |               |               | ■             | ■             | ■             |               |               |               |  |  |  |  |  |  |   |

|  |   |          |
|--|---|----------|
| <b>GB192i.2 15-50 / GB192i.2-30 T40S</b><br><b>GBH192i.2 15-35</b> | Kabelbaum<br>Cable harness<br>Faisceau de câbles<br>Cablaggio | <b>5</b> |
|--|---|----------|

Ersatzteilliste  
Spare parts list

Liste des pièces de rechange  
Lista parti di ricambio



6721904165.ae

6

Bedienelement  
Control panel  
Unité de commande  
Interfaccia controllo

**GB192i.2 15-50 / GB192i.2-30 T40S**  
**GBH192i.2 15-35**

| Pos | Bezeichnung<br>Description<br>Dénomination<br>Descrizioni |                 |               |               |               |               |               |               |               |               |               |               | Bemerkungen<br>Remarks<br>Remarques<br>Osservazioni |  |  |  |  |  |  |  |  |  |  |   |
|-----|---|-----------------|---------------|---------------|---------------|---------------|---------------|---------------|---------------|---------------|---------------|---------------|---|--|--|--|--|--|--|--|--|--|--|---|
|     |   |                 | 7-736-702-058 | 7-736-702-059 | 7-736-702-060 | 7-736-702-061 | 7-736-702-062 | 7-736-702-063 | 7-736-702-064 | 7-736-702-065 | 7-736-702-066 | 7-736-702-067 |   |  |  |  |  |  |  |  |  |  |  |   |
| 1   | Bedienelement Logamatic BC400-FO                          | 8 737 715 305   | ■             | ■             | ■             | ■             | ■             | ■             | ■             | ■             | ■             |               |   |  |  |  |  |  |  |  |  |  |  |   |
| 2   | Steuereinheit ACU MHP-20                                  | 8 737 714 735   | ■             | ■             | ■             | ■             | ■             | ■             | ■             | ■             | ■             |               |   |  |  |  |  |  |  |  |  |  |  |   |
| 3   | Halterung (Steuereinheit)                                 | 8 737 709 147   | ■             | ■             | ■             | ■             | ■             | ■             | ■             | ■             | ■             |               |   |  |  |  |  |  |  |  |  |  |  |   |
| 4   | Zugentlastung   | 8 712 201 007 0 | ■             | ■             | ■             | ■             | ■             | ■             | ■             | ■             | ■             |               |   |  |  |  |  |  |  |  |  |  |  |   |
| 5   | Abdeckung (Zugang Installateur)                           | 8 737 709 196   | ■             | ■             | ■             | ■             | ■             | ■             | ■             | ■             | ■             |               |   |  |  |  |  |  |  |  |  |  |  |   |
| 6   | Abdeckung (Ip PluX)                                       | 8 737 709 148   | ■             | ■             | ■             | ■             | ■             | ■             | ■             | ■             | ■             |               |   |  |  |  |  |  |  |  |  |  |  |   |
| 7   | Verriegelung (PluX)                                       | 8 737 709 149   | ■             | ■             | ■             | ■             | ■             | ■             | ■             | ■             | ■             |               |   |  |  |  |  |  |  |  |  |  |  |   |
| 8   | Kabeldurchführung 2-polig                                 | 8 737 704 495 0 | ■             | ■             | ■             | ■             | ■             | ■             | ■             | ■             | ■             |               |   |  |  |  |  |  |  |  |  |  |  |   |
| 9   | Verbindungselement (2x)                                   | 8 737 709 145   | ■             | ■             | ■             | ■             | ■             | ■             | ■             | ■             | ■             |               |   |  |  |  |  |  |  |  |  |  |  |   |
| 11  | Sicherungshalter  | 8 716 121 950   | ■             | ■             | ■             | ■             | ■             | ■             | ■             | ■             | ■             |               |   |  |  |  |  |  |  |  |  |  |  |   |
| 12  | Sicherung 5x20mm Fast Acting (5x)                         | 8 716 116 900   | ■             | ■             | ■             | ■             | ■             | ■             | ■             | ■             | ■             |               |   |  |  |  |  |  |  |  |  |  |  |   |
| 13  | HCM 20337   | 8 738 903 702   |               |               |               |               |               |               |               |               |               |               |   |  |  |  |  |  |  |  |  |  |  | ■ |
| 13  | HCM 20325   | 8 738 905 789   | ■             | ■             |               |               |               |               |               |               |               |               |   |  |  |  |  |  |  |  |  |  |  |   |
| 13  | HCM 20327   | 8 738 905 790   |               |               | ■             | ■             |               |               |               |               |               |               |   |  |  |  |  |  |  |  |  |  |  |   |
| 13  | HCM 20383   | 8 738 905 791   |               |               |               |               |               | ■             |               |               |               |               |   |  |  |  |  |  |  |  |  |  |  |   |
| 13  | HCM 20335   | 8 738 905 792   |               |               |               |               |               |               |               |               |               |               |   |  |  |  |  |  |  |  |  |  |  | ■ |
| 13  | HCM 20329   | 8 738 905 793   |               |               |               |               |               |               |               | ■             |               |               |   |  |  |  |  |  |  |  |  |  |  |   |
| 13  | HCM 20331   | 8 738 905 794   |               |               |               |               |               |               |               |               |               |               |   |  |  |  |  |  |  |  |  |  |  | ■ |
| 13  | HCM 20333   | 8 738 905 795   |               |               |               |               |               |               |               |               |               |               |   |  |  |  |  |  |  |  |  |  |  | ■ |
| 14  | Anschlusskl. 2-polig (reinerorange)RAL2004                | 8 716 119 984   | ■             | ■             | ■             | ■             | ■             | ■             | ■             | ■             | ■             |               |   |  |  |  |  |  |  |  |  |  |  |   |
| 15  | Anschlusskl. 2-polig (lichtblau) RAL5012                  | 8 716 119 953   | ■             | ■             | ■             | ■             | ■             | ■             | ■             | ■             | ■             |               |   |  |  |  |  |  |  |  |  |  |  |   |
| 16  | Anschlusskl. 2-polig (signalblau)RAL5005                  | 8 716 119 985   | ■             | ■             | ■             | ■             | ■             | ■             | ■             | ■             | ■             |               |   |  |  |  |  |  |  |  |  |  |  |   |
| 17  | Anschlusskl. 2-polig (gelbgrün) RAL6018                   | 8 716 119 954   | ■             | ■             | ■             | ■             | ■             | ■             | ■             | ■             | ■             |               |   |  |  |  |  |  |  |  |  |  |  |   |
| 18  | Anschlusskl. 2-polig (silbergrau)RAL7001                  | 8 716 119 956   | ■             | ■             | ■             | ■             | ■             | ■             | ■             | ■             | ■             |               |   |  |  |  |  |  |  |  |  |  |  |   |
| 19  | Anschlusskl. 2-polig(graphitgrau)RAL7024                  | 8 716 119 988   | ■             | ■             | ■             | ■             | ■             | ■             | ■             | ■             | ■             |               |   |  |  |  |  |  |  |  |  |  |  |   |
| 20  | Anschlusskl.2-pol.(pastellviol.)RAL4009                   | 8 716 119 987   | ■             | ■             | ■             | ■             | ■             | ■             | ■             | ■             | ■             |               |   |  |  |  |  |  |  |  |  |  |  |   |
| 21  | Anschlusskl. 2-polig (signalgrün)RAL6032                  | 8 716 119 983   | ■             | ■             | ■             | ■             | ■             | ■             | ■             | ■             | ■             |               |   |  |  |  |  |  |  |  |  |  |  |   |
| 24  | Anschlusskl. 2-polig (cremeweiß) RAL9001                  | 8 716 119 955   | ■             | ■             | ■             | ■             | ■             | ■             | ■             | ■             | ■             |               |   |  |  |  |  |  |  |  |  |  |  |   |
| 25  | Anschlusskl. 2-polig (rotviolett)RAL4001                  | 8 716 119 957   | ■             | ■             | ■             | ■             | ■             | ■             | ■             | ■             | ■             |               |   |  |  |  |  |  |  |  |  |  |  |   |
| 26  | Anschlussklemme 2-polig (orangebraun)                     | 8 738 903 694   | ■             | ■             | ■             | ■             | ■             | ■             | ■             | ■             | ■             |               |   |  |  |  |  |  |  |  |  |  |  |   |
| 27  | Schraube M5X12 (10x)                                      | 2 912 301 154 0 | ■             | ■             | ■             | ■             | ■             | ■             | ■             | ■             | ■             |               |   |  |  |  |  |  |  |  |  |  |  |   |
| 28  | Anschlussklemmen-Set                                      | 8 737 604 210   | ■             | ■             | ■             | ■             | ■             | ■             | ■             | ■             | ■             |               |   |  |  |  |  |  |  |  |  |  |  |   |
| 29  | Außentemperaturfühler                                     | 8 718 585 355   | ■             | ■             | ■             | ■             | ■             | ■             | ■             | ■             | ■             |               |   |  |  |  |  |  |  |  |  |  |  |   |

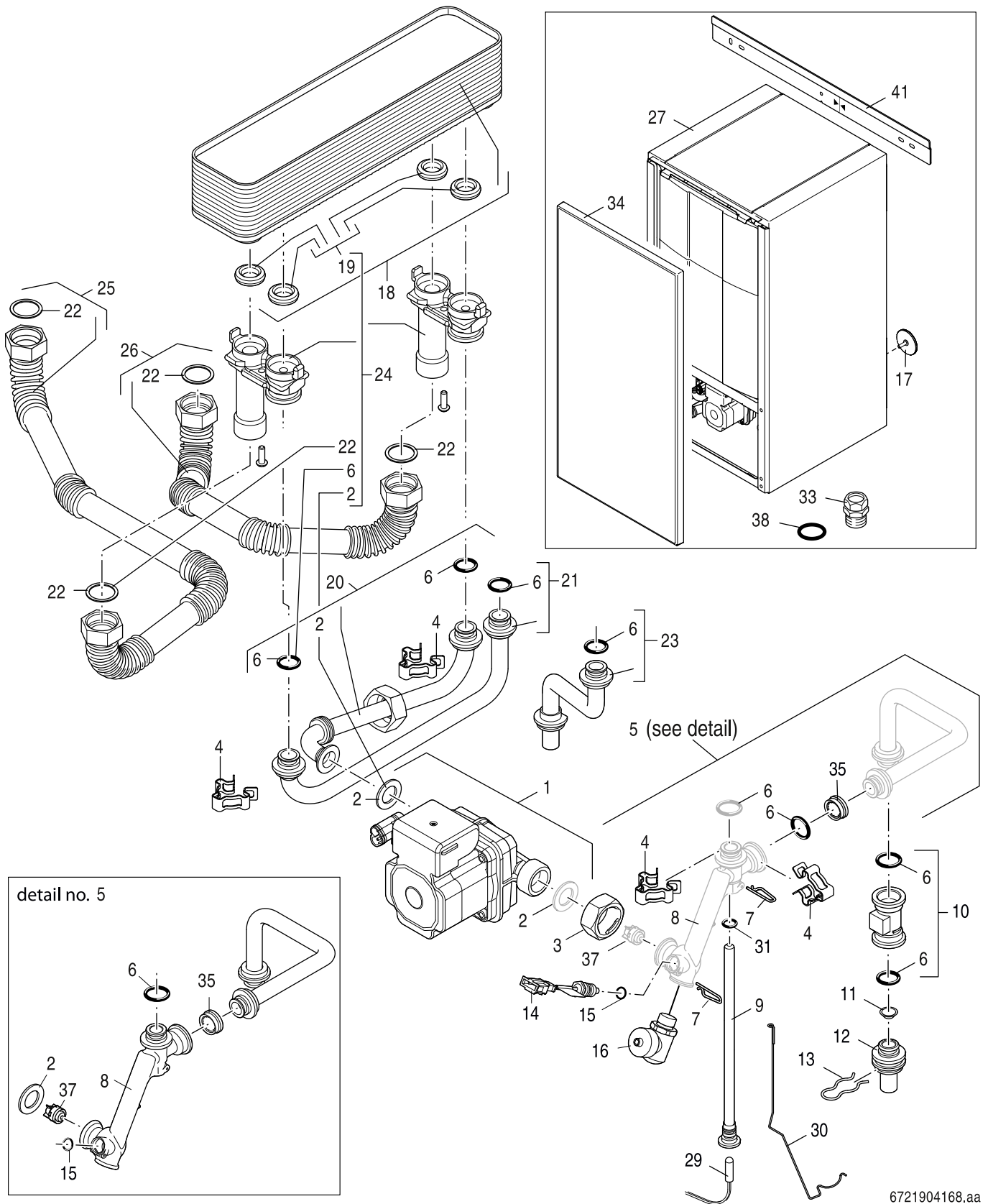
**GB192i.2 15-50 / GB192i.2-30 T40S**  
**GBH192i.2 15-35**

Bedienelement  
Control panel  
Unité de commande  
Interfaccia controllo

**6**

**Ersatzteilliste**  
**Spare parts list**

**Liste des pièces de rechange**  
**Lista parti di ricambio**



6721904168.aa

**7** Speicher  
Storage tank  
Ballon  
Bollitore

**GB192i.2 15-50 / GB192i.2-30 T40S**  
**GBH192i.2 15-35**

| Pos | Bezeichnung<br>Description<br>Dénomination<br>Descrizioni |                 | 7-736-702-058 | 7-736-702-059 | 7-736-702-060 | 7-736-702-061 | 7-736-702-062 | 7-736-702-063 | 7-736-702-064 | 7-736-702-065 | 7-736-702-066 | 7-736-702-067 |  |  |  |  |  |  | Bemerkungen<br>Remarks<br>Remarques<br>Osservazioni |
|-----|---|-----------------|---------------|---------------|---------------|---------------|---------------|---------------|---------------|---------------|---------------|---------------|--|--|--|--|--|--|---|
| 1   | Pumpe   | 7 746 900 276   |               |               |               |               |               |               |               |               |               | ■             |  |  |  |  |  |  |   |
| 2   | Dichtung 1" (10x)   | 7 099 176       |               |               |               |               |               |               |               |               |               | ■             |  |  |  |  |  |  |   |
| 3   | Überwurfmutter  | 7 099 416       |               |               |               |               |               |               |               |               |               | ■             |  |  |  |  |  |  |   |
| 4   | Klammer   | 7 746 900 283   |               |               |               |               |               |               |               |               |               | ■             |  |  |  |  |  |  |   |
| 5   | Rohr (Kaltwasser)   | 7 736 700 096   |               |               |               |               |               |               |               |               |               | ■             |  |  |  |  |  |  |   |
| 6   | O-Ring 13,87x3,53 (10x)                                   | 8 716 771 155 0 |               |               |               |               |               |               |               |               |               | ■             |  |  |  |  |  |  |   |
| 7   | Haltefeder (5x)   | 8 718 600 321   |               |               |               |               |               |               |               |               |               | ■             |  |  |  |  |  |  |   |
| 8   | Vorlaufrohr (Pumpe)                                       | 8 718 600 260   |               |               |               |               |               |               |               |               |               | ■             |  |  |  |  |  |  |   |
| 9   | Tauchhülse  | 7 746 900 907   |               |               |               |               |               |               |               |               |               | ■             |  |  |  |  |  |  |   |
| 10  | Strömungsfühler   | 8 738 901 168   |               |               |               |               |               |               |               |               |               | ■             |  |  |  |  |  |  |   |
| 11  | Filter  | 7 746 900 312   |               |               |               |               |               |               |               |               |               | ■             |  |  |  |  |  |  |   |
| 12  | Anschlussnippel   | 7 746 900 251   |               |               |               |               |               |               |               |               |               | ■             |  |  |  |  |  |  |   |
| 13  | Haltefeder (5x)   | 7 099 170       |               |               |               |               |               |               |               |               |               | ■             |  |  |  |  |  |  |   |
| 14  | Temperaturfühler  | 8 738 901 126   |               |               |               |               |               |               |               |               |               | ■             |  |  |  |  |  |  |   |
| 15  | O-Ring 9,25x1,78 (10x)                                    | 7 099 165       |               |               |               |               |               |               |               |               |               | ■             |  |  |  |  |  |  |   |
| 16  | Füll- und Entleerhahn                                     | 7 101 516       |               |               |               |               |               |               |               |               |               | ■             |  |  |  |  |  |  |   |
| 17  | Stellschraube (2x)  | 7 101 394       |               |               |               |               |               |               |               |               |               | ■             |  |  |  |  |  |  |   |
| 18  | Plattenwärmetauscher                                      | 8 738 900 592   |               |               |               |               |               |               |               |               |               | ■             |  |  |  |  |  |  |   |
| 19  | O-Ring 25.08x8 (10x)                                      | 7 746 900 279   |               |               |               |               |               |               |               |               |               | ■             |  |  |  |  |  |  |   |
| 20  | Vorlaufrohr (Plattenwärmetauscher)                        | 8 738 900 593   |               |               |               |               |               |               |               |               |               | ■             |  |  |  |  |  |  |   |
| 21  | Vorlaufrohr (Speicher)                                    | 8 738 900 594   |               |               |               |               |               |               |               |               |               | ■             |  |  |  |  |  |  |   |
| 22  | Flachdichtung 3/4" (10x)                                  | 7 100 196       |               |               |               |               |               |               |               |               |               | ■             |  |  |  |  |  |  |   |
| 23  | Rohr (Warmwasser)   | 7 736 700 099   |               |               |               |               |               |               |               |               |               | ■             |  |  |  |  |  |  |   |
| 24  | Anschlussstück (Plattenwärmetausch) (2x)                  | 8 738 900 595   |               |               |               |               |               |               |               |               |               | ■             |  |  |  |  |  |  |   |
| 25  | Vorlaufrohr (Kessel)                                      | 8 738 900 596   |               |               |               |               |               |               |               |               |               | ■             |  |  |  |  |  |  |   |
| 26  | Rücklaufrohr (Kessel)                                     | 8 738 900 597   |               |               |               |               |               |               |               |               |               | ■             |  |  |  |  |  |  |   |
| 27  | Speicher T40s   | 8 738 903 943   |               |               |               |               |               |               |               |               |               | ■             |  |  |  |  |  |  |   |
| 29  | Temperaturfühler (Warmwasser)                             | 7 098 774       |               |               |               |               |               |               |               |               |               | ■             |  |  |  |  |  |  |   |
| 30  | Haltefeder  | 7 746 900 270   |               |               |               |               |               |               |               |               |               | ■             |  |  |  |  |  |  |   |
| 31  | O-Ring 9,25x1,78 (10x)                                    | 7 099 165       |               |               |               |               |               |               |               |               |               | ■             |  |  |  |  |  |  |   |
| 33  | Anschlussverbindung 1/2" kpl                              | 7 099 222       |               |               |               |               |               |               |               |               |               | ■             |  |  |  |  |  |  |   |
| 34  | Frontabdeckung (Speicher) T40s                            | 8 738 903 944   |               |               |               |               |               |               |               |               |               | ■             |  |  |  |  |  |  |   |
| 35  | Durchflussbegrenzer 15l/min E-W grün                      | 7 736 700 100   |               |               |               |               |               |               |               |               |               | ■             |  |  |  |  |  |  |   |
| 37  | Rückschlagventil  | 7 746 900 269   |               |               |               |               |               |               |               |               |               | ■             |  |  |  |  |  |  |   |
| 38  | O-Ring 85x5.3   | 7 746 900 572   |               |               |               |               |               |               |               |               |               | ■             |  |  |  |  |  |  |   |
| 41  | Wandhalter  | 7 746 900 149   |               |               |               |               |               |               |               |               |               | ■             |  |  |  |  |  |  |   |

**GB192i.2 15-50 / GB192i.2-30 T40S**  
**GBH192i.2 15-35**

Speicher  
Storage tank  
Ballon  
Bollitore

**7**

**Übersetzungsliste**  
**List of translations**

**Liste des traductions**  
**Traduzione delle descrizioni**

| Pos      | Description                        | Description                          | Descrizione                             |  |  |
|----------|------------------------------------|--------------------------------------|---|--|--|
| <b>1</b> | <b>Element of construction</b>     | <b>Groupe d'assemblage</b>           | <b>Gruppo di montaggio</b>              |  |  |
| 1        | Front panel Buderus (white)        | Panneau avant Buderus (blanc)        | Pannello Buderus (bianco)               |  |  |
| 1        | Front panel Buderus (black)        | Panneau avant Buderus (noir)         | Pannello Buderus (nero)                 |  |  |
| 2        | Air box                            | Caisson                              | Camera ventilazione                     |  |  |
| 3        | Screw M5x12 lg pozi pan head       | Vis M5x12 lg pozi                    | Vite M5x12 lg pozi                      |  |  |
| 4        | Bracket (left)                     | Support (gauche)                     | Supporto (sinistro)                     |  |  |
| 5        | Bracket (right)                    | Support (droit)                      | Supporto (destro)                       |  |  |
| 6        | Screw 4,8x13 DIN7981 (10x)         | Vis de fixation DIN7981 4,8X13 (10X) | Vite 4,8x13 DIN7981 (10x)               |  |  |
| 7        | Fastener                           | Étrier de serrage                    | Gancio di chiusura                      |  |  |
| 8        | Insulation (front)                 | Isolation (avant)                    | Coibentazione (frontale)                |  |  |
| 9        | Insulation (bottom)                | Isolation (inférieur)                | Coibentazione (inferiore)               |  |  |
| 11       | Cover (1x)                         | Couvercle (1x)                       | Copertura (1x)                          |  |  |
| 12       | Flue adapter DN 80/125             | Adaptateur des fumées DN 80/125      | Adattatore gas di combustione DN 80/125 |  |  |
| 14       | Lip seal DN80                      | Joint à lèvres DN80                  | Guarnizione DN80                        |  |  |
| 15       | Screw 4,8x25                       | Vis 4,8x25                           | Vite 4,8x25                             |  |  |
| 16       | Plug                               | Bouchon                              | Tappo                                   |  |  |
| 17       | Clip + Screw 4.8x13 (2x)           | Ecrou en pince + Vis 4,8x13 (2x)     | Dado a scatto + Vite 4,8x13 (2x)        |  |  |
| 18       | Flue pipe                          | Tuyau de fumées                      | Condotto per gas combusti               |  |  |
| 19       | Lip seal DN80                      | Joint DN80                           | Guarnizione DN80                        |  |  |
| 21       | Top panel                          | Panneau supérieur                    | Pannello superiore                      |  |  |
| 22       | Flue outlet                        | Raccordement des gaz d'échappement   | Connessione aria/combusti in caldaia    |  |  |
| 23       | Clip                               | Clip                                 | Clip a innesto                          |  |  |
| 25       | Wall mounting bracket              | Plaque d'accrochage                  | Supporto a parete                       |  |  |
| 26       | Leveling foot (2x)                 | Vis de réglage (2x)                  | Vite di regolazione (2x)                |  |  |
| 28       | Support (Expansion vessel)         | Support (Vase d'expansion)           | Supporto (Vaso d'espansione)            |  |  |
| 29       | Screw M5X12 (10x)                  | Vis M5X12 (10x)                      | Vite M5X12 (10x)                        |  |  |
| 32       | Screw B4x10-St-H                   | Vis B4x10-St-H                       | Vite B4x10-St-H                         |  |  |
| <b>2</b> | <b>Element of construction</b>     | <b>Groupe d'assemblage</b>           | <b>Gruppo di montaggio</b>              |  |  |
| 1        | Heat exchanger WB5-IV              | Échangeur de chaleur WB5-IV          | Scambiatore di calore WB5-IV            |  |  |
| 1        | Heat exchanger WB5-II+             | Echangeur de chaleur WB5-II+         | Scambiatore di calore WB5-II+           |  |  |
| 2        | Electrode kit                      | Jeu d'électrodes                     | Set di elettrodi                        |  |  |
| 3        | Gasket (Electrode) Insulfrax (10x) | Joint (Électrode) Insulfrax (10x)    | Guarnizione (Elettrodo) Insulfrax (10x) |  |  |

**Übersetzungsliste**  
**List of translations**

**Liste des traductions**  
**Traduzione delle descrizioni**

| Pos      | Description                    | Description                              | Descrizione                           |  |  |
|----------|--------------------------------|--|---------------------------------------|--|--|
| 4        | Condensate tray                | Collecteur de condensats                 | Collettore combusti                   |  |  |
| 5        | Temperature limiter            | Limiteur de température                  | Limitatore di temperatura             |  |  |
| 6        | Return manifold                | Raccordement retour                      | Collegamento ritorno                  |  |  |
| 7        | Temperature sensor NTC         | Sonde de température NTC                 | Sonda di temperatura NTC              |  |  |
| 8        | Service cover WB5-II+          | Couvercle de maintenance WB5-II plus     | Copertura per manutenzione WB5-II+    |  |  |
| 8        | Service cover WB5-IV           | Couvercle de maintenance WB5-IV          | Copertura per manutenzione WB5-IV     |  |  |
| 9        | Seal (Service cover) WB5-II+   | Joint (Couvercle de maintenance) WB5-II+ | Guarnizione (Copertura manutenzione)  |  |  |
| 9        | Seal (Service cover) WB5-IV    | Joint couvercle WB5-IV                   | Guarnizione (Copertura manutenzione)  |  |  |
| 10       | Condensate tray collector seal | Joint collecteur de condensats           | Guarnizione collettore combusti       |  |  |
| 11       | Seal Ø 87,5mm                  | Joint Ø 87,5mm                           | Guarnizione Ø 87,5mm                  |  |  |
| 12       | Seal kit                       | Jeu de joints                            | Set di guarnizioni                    |  |  |
| 13       | Seal burner WB5-II+ CMS <=42kW | Joint brûleur WB5-II plus CMS <=42kW     | Guarnizione bruciatore WB5-II + CMS < |  |  |
| 13       | Seal burner WB5-II+ >=45kW     | Joint brûleur WB5-II+ >=45kW             | Guarnizione bruciatore WB5-II +>=45kW |  |  |
| 14       | Screw M8x42                    | Vis M8x42                                | Vite M8x42                            |  |  |
| 15       | Seal (Gas-air duct)            | Joint canal mélange gaz-air              | Guarnizione (Condotto gas-aira)       |  |  |
| 16       | Bracket                        | Support                                  | Supporto                              |  |  |
| 18       | Burner cover WB5-IV            | Capot de brûleur WB5-IV                  | Coperchio del bruciatore WB5-IV       |  |  |
| 18       | Burner cover WB5-II+           | Capot de brûleur WB5-II+                 | Coperchio del bruciatore WB5-II+      |  |  |
| 19       | Burner WB5-IV                  | Brûleur WB5-IV                           | Bruciatore WB5-IV                     |  |  |
| 19       | Burner WB5-II+                 | Brûleur WB5-II+                          | Bruciatore WB5-II+                    |  |  |
| 21       | Nut                            | Écrou                                    | Dado                                  |  |  |
|          | Service kit WB5-II+ <45kW      | Kit de maintenance WB5-II+ <45kW         | Set di manutenzione WB5-II+ <45kW     |  |  |
|          | Service kit WB5-IV >45kW       | Kit de maintenance WB5-IV >45kW          | Set di manutenzione WB5-IV >45kW      |  |  |
|          | Seal kit L                     | Jeu de joints L                          | Set di guarnizioni L                  |  |  |
|          | Seal kit M                     | Jeu de joints M                          | Set di guarnizioni M                  |  |  |
| <b>3</b> | <b>Element of construction</b> | <b>Groupe d'assemblage</b>               | <b>Gruppo di montaggio</b>            |  |  |
| 1        | Gas-air duct WB5-II+           | Conduit gaz-air WB5-II+                  | Condotto gas-aira WB5-II+             |  |  |
| 1        | Gas-air duct WB5-IV            | Conduit gaz-air WB5-IV                   | Condotto gas-aira WB5-IV              |  |  |
| 2        | Seal (Gas-air duct)            | Joint canal mélange gaz-air              | Guarnizione (Condotto gas-aira)       |  |  |
| 3        | Sound absorber                 | Silencieux                               | Silenziatore                          |  |  |
| 4        | Non-return valve               | Clapet anti-retour                       | Valvola di non ritorno                |  |  |
| 5        | Lip seal                       | Joint                                    | Guarnizione                           |  |  |

**Übersetzungsliste**  
**List of translations**

**Liste des traductions**  
**Traduzione delle descrizioni**

| Pos       | Description                          | Description                         | Descrizione                          |  |  |
|-----------|--------------------------------------|-------------------------------------|--------------------------------------|--|--|
| 7         | O-ring 63x3 (10x)                    | Joint torique 63x3 (10x)            | O-ring 63x3 (10x)                    |  |  |
| 8         | Mixing unit                          | Chambre de mélange                  | Unità di miscelazione                |  |  |
| 9         | Screw M4x8                           | Vis M4x8                            | Vite M4x8                            |  |  |
| 10        | Security seal (Venturi) (10x)        | Sceau de sécurité (Venturi) (10x)   | Sigillo di sicurezza (Venturi) (10x) |  |  |
| 11        | Gas pipe                             | Tube gaz                            | Tubo del gas                         |  |  |
| 12        | Seal (10x)                           | Joint (10x)                         | Guarnizione (10x)                    |  |  |
| 13        | O-ring 12x3 (10x)                    | Joint torique 12x3 (10x)            | O-ring 12x3 (10x)                    |  |  |
| 14        | Gas valve                            | Bloc gaz                            | Valvola del gas                      |  |  |
| 16        | Gasket                               | Joint                               | Guarnizione                          |  |  |
| 17        | Gas pipe                             | Tube gaz                            | Tubo del gas                         |  |  |
| 20        | Fan                                  | Ventilateur                         | Ventilatore                          |  |  |
| 21        | Venturi                              | Venturi                             | Venturi                              |  |  |
| 22        | Nut M6 + Screw M6x30-5.8             | Ecrou + Vis M6x30-5.8               | Dado + Vite M6x30-5.8                |  |  |
| 24        | Cap (Inspection point)               | Capuchon                            | Tappo                                |  |  |
| 25        | Screw M5x12 (10x)                    | Vis M5x12 (10x)                     | Vite M5x12 (10x)                     |  |  |
| <b>4A</b> | <b>Element of construction</b>       | <b>Groupe d'assemblage</b>          | <b>Gruppo di montaggio</b>           |  |  |
| 1         | Pump UPM3 ErP                        | Pompe UPM3 ErP                      | Pompa UPM3 ErP                       |  |  |
| 2         | Siphon                               | Siphon                              | Sifone                               |  |  |
| 3         | Seal kit (10x)                       | Jeu de joints (10x)                 | Set di guarnizioni (10x)             |  |  |
| 4         | Cap                                  | Bouchon inférieur                   | Coperchio                            |  |  |
| 5         | Seal                                 | Joint pour siphon                   | Guarnizione                          |  |  |
| 6         | Safety relief valve + Pressure gauge | Soupape de sécurité avec manomètre  | Valvola di sicurezza + Manometro     |  |  |
| 7         | Gasket (5x)                          | Joint (5x)                          | Guarnizione (5x)                     |  |  |
| 8         | Drain pipe                           | Conduit d'évacuation                | Raccordo scarico                     |  |  |
| 9         | Air vent                             | Purgeur                             | Disaeratore                          |  |  |
| 10        | Drain hose                           | Tuyau d'évacuation                  | Tubo flessibile di scarico           |  |  |
| 11        | Supply pipe (bottom) 15-35 kW        | Tube départ (inférieur) 15-35 kW    | Tubo di mandata (inferiore) 15-35 kW |  |  |
| 12        | O-ring 20,22x3,53 EPDM (10x)         | Joint torique 20,22x3,53 EPDM (10x) | O-ring 20,22x3,53 EPDM (10x)         |  |  |
| 13        | Grommet                              | Passe-fil                           | Anello di gomma                      |  |  |
| 14        | Supply pipe (top) 15-35 kW           | Tube départ (supérieur) 15-35 kW    | Tubo di mandata (superiore) 15-35 kW |  |  |
| 16        | Air vent                             | Soupape de ventilation              | Disaeratore                          |  |  |
| 17        | Clip                                 | Clip                                | Clip a innesto                       |  |  |



**Übersetzungsliste**  
**List of translations**

**Liste des traductions**  
**Traduzione delle descrizioni**

| Pos       | Description                          | Description                        | Descrizione                       |  |  |
|-----------|--------------------------------------|------------------------------------|-----------------------------------|--|--|
| 18        | Gasket 22,2x30x2                     | Joint 22,2x30x2                    | Guarnizione 22,2x30x2             |  |  |
| 19        | Return pipe                          | Tube retour                        | Tubo di ritorno                   |  |  |
| 20        | O-ring 17x4 (10x)                    | Joint torique 17x4 (10x)           | O-ring 17x4 (10x)                 |  |  |
| 21        | Clip (10x)                           | Clip pour tuyau (x10)              | Clip a innesto (10x)              |  |  |
| 22        | Union nut                            | Écrou-raccord                      | Ghiera filettata                  |  |  |
| 23        | Clip                                 | Épingle                            | Molletta di ritenzione            |  |  |
| 24        | Body (3-way valve)                   | Corps (Vanne 3 voies)              | Corpo (3 vie)                     |  |  |
| 25        | O-ring 14.48x2.62 (10x)              | Joint torique 14.48x2.62 (10x)     | O-ring 14,48x2,62 (10x)           |  |  |
| 26        | Clip (5x)                            | Clips (5x)                         | Clip a innesto (5x)               |  |  |
| 27        | Return manifold                      | Raccordement retour                | Collegamento ritorno              |  |  |
| 28        | Temperature sensor                   | Sonde de température               | Sonda di temperatura              |  |  |
| 29        | Supply pipe 15-35 kW                 | Tube départ 15-35 kW               | Tubo di mandata 15-35 kW          |  |  |
| 30        | O-ring 3.53x29.74 (10x)              | Joint torique 3,53x29,74 (10x)     | O-ring 3,53x29,74 (10x)           |  |  |
| 31        | Clip (2x)                            | Bride échangeur de chaleur (2x)    | Clip a innesto (2x)               |  |  |
| 33        | Pressure sensor                      | Capteur de pression                | Sonda di pressione                |  |  |
| 34        | O-ring                               | Kit joint torique vanne 3 voies    | O-ring                            |  |  |
| 35        | 3-way valve (15-45kW)                | Vanne à 3 voies (15-45kW)          | Organo 3 vie (15-45kW)            |  |  |
| 36        | Screw M5x16 (5x)                     | Vis M5x16 (5x)                     | Vite M5x16 (5x)                   |  |  |
| 37        | Clip                                 | Clip de maintien                   | Clip die ritenzione               |  |  |
| 38        | Plug                                 | Bouchon                            | Tappo                             |  |  |
| 53        | No spare parts available             | Aucune pièce détachée disponible   | Non disponibili parti di ricambio |  |  |
| 76        | Screw M5x12 (10x)                    | Vis M5x12 (10x)                    | Vite M5x12 (10x)                  |  |  |
| 80        | Clip 10mm (10x)                      | Épingle D10 (x10)                  | Molletta di ritenzione 10mm (10x) |  |  |
| 87        | O-ring 7,75x2,1 (10x)                | Joint torique 7,75x2,1 (10x)       | O-ring 7,75x2,1 (10x)             |  |  |
| <b>4B</b> | <b>Element of construction</b>       | <b>Groupe d'assemblage</b>         | <b>Gruppo di montaggio</b>        |  |  |
| 1         | Pump UPM4L 75W ErP1 (Cast iron)      | Pompe UPM4L 75W ErP1 (Fonte)       | Pompa UPM4L 75W ErP1 (Ghisa)      |  |  |
| 2         | Siphon                               | Siphon                             | Sifone                            |  |  |
| 3         | Seal kit (10x)                       | Jeu de joints (10x)                | Set di guarnizioni (10x)          |  |  |
| 4         | Cap                                  | Bouchon inférieur                  | Coperchio                         |  |  |
| 5         | Seal                                 | Joint pour siphon                  | Guarnizione                       |  |  |
| 6         | Safety relief valve + Pressure gauge | Soupape de sécurité avec manomètre | Valvola di sicurezza + Manometro  |  |  |
| 7         | Gasket (5x)                          | Joint (5x)                         | Guarnizione (5x)                  |  |  |

**Übersetzungsliste**  
**List of translations**

**Liste des traductions**  
**Traduzione delle descrizioni**

| Pos       | Description                          | Description                         | Descrizione                       |  |  |
|-----------|--------------------------------------|-------------------------------------|-----------------------------------|--|--|
| 8         | Drain pipe                           | Conduit d'évacuation                | Raccordo scarico                  |  |  |
| 9         | Air vent                             | Purgeur                             | Disaeratore                       |  |  |
| 10        | Drain hose                           | Tuyau d'évacuation                  | Tubo flessibile di scarico        |  |  |
| 11        | Supply pipe (bottom) 50 kW           | Tube départ (inférieur) 50 kW       | Tubo di mandata (inferiore) 50 kW |  |  |
| 12        | O-ring 20,22x3,53 EPDM (10x)         | Joint torique 20,22x3,53 EPDM (10x) | O-ring 20,22x3,53 EPDM (10x)      |  |  |
| 13        | Grommet                              | Passe-fil                           | Anello di gomma                   |  |  |
| 14        | Supply pipe (top) 50 kW              | Tube départ (supérieur) 50 kW       | Tubo di mandata (superiore) 50 kW |  |  |
| 16        | Air vent                             | Soupape de ventilation              | Disaeratore                       |  |  |
| 17        | Clip                                 | Clip                                | Clip a innesto                    |  |  |
| 18        | Gasket 22,2x30x2                     | Joint 22,2x30x2                     | Guarnizione 22,2x30x2             |  |  |
| 19        | Return pipe                          | Tube retour                         | Tubo di ritorno                   |  |  |
| 20        | O-ring 17x4 (10x)                    | Joint torique 17x4 (10x)            | O-ring 17x4 (10x)                 |  |  |
| 21        | Clip (10x)                           | Clip pour tuyau (x10)               | Clip a innesto (10x)              |  |  |
| 22        | Union nut                            | Écrou-raccord                       | Ghiera filettata                  |  |  |
| 23        | Clip                                 | Épingle                             | Molletta di ritenzione            |  |  |
| 27        | Return pipe 50 kW                    | Tube retour 50 kW                   | Tubo di ritorno 50 kW             |  |  |
| 28        | Temperature sensor                   | Sonde de température                | Sonda di temperatura              |  |  |
| 29        | Supply manifold                      | Raccordement départ                 | Collegamento mandata              |  |  |
| 33        | Pressure sensor                      | Capteur de pression                 | Sonda di pressione                |  |  |
| 37        | Clip                                 | Clip de maintien                    | Clip die ritenzione               |  |  |
| 76        | Screw M5x12 (10x)                    | Vis M5x12 (10x)                     | Vite M5x12 (10x)                  |  |  |
| 80        | Clip 10mm (10x)                      | Épingle D10 (x10)                   | Molletta di ritenzione 10mm (10x) |  |  |
| 87        | O-ring 7,75x2,1 (10x)                | Joint torique 7,75x2,1 (10x)        | O-ring 7,75x2,1 (10x)             |  |  |
| <b>4C</b> | <b>Element of construction</b>       | <b>Groupe d'assemblage</b>          | <b>Gruppo di montaggio</b>        |  |  |
| 1         | Pump UPM3 ErP                        | Pompe UPM3 ErP                      | Pompa UPM3 ErP                    |  |  |
| 2         | Siphon                               | Siphon                              | Sifone                            |  |  |
| 3         | Seal kit (10x)                       | Jeu de joints (10x)                 | Set di guarnizioni (10x)          |  |  |
| 4         | Cap                                  | Bouchon inférieur                   | Coperchio                         |  |  |
| 5         | Seal                                 | Joint pour siphon                   | Guarnizione                       |  |  |
| 6         | Safety relief valve + Pressure gauge | Soupape de sécurité avec manomètre  | Valvola di sicurezza + Manometro  |  |  |
| 7         | Gasket (5x)                          | Joint (5x)                          | Guarnizione (5x)                  |  |  |
| 8         | Drain pipe                           | Conduit d'évacuation                | Raccordo scarico                  |  |  |

**Übersetzungsliste**  
**List of translations**

**Liste des traductions**  
**Traduzione delle descrizioni**

| Pos | Description                   | Description                         | Descrizione                          |  |  |
|-----|-------------------------------|-------------------------------------|--------------------------------------|--|--|
| 9   | Air vent                      | Purgeur                             | Disaeratore                          |  |  |
| 10  | Drain hose                    | Tuyau d'évacuation                  | Tubo flessibile di scarico           |  |  |
| 11  | Supply pipe (bottom) 15-35 kW | Tube départ (inférieur) 15-35 kW    | Tubo di mandata (inferiore) 15-35 kW |  |  |
| 12  | O-ring 20,22x3,53 EPDM (10x)  | Joint torique 20,22x3,53 EPDM (10x) | O-ring 20,22x3,53 EPDM (10x)         |  |  |
| 13  | Grommet                       | Passe-fil                           | Anello di gomma                      |  |  |
| 14  | Supply pipe (top) 15-35 kW    | Tube départ (supérieur) 15-35 kW    | Tubo di mandata (superiore) 15-35 kW |  |  |
| 16  | Air vent                      | Soupape de ventilation              | Disaeratore                          |  |  |
| 17  | Clip                          | Clip                                | Clip a innesto                       |  |  |
| 18  | Gasket 22,2x30x2              | Joint 22,2x30x2                     | Guarnizione 22,2x30x2                |  |  |
| 19  | Return pipe                   | Tube retour                         | Tubo di ritorno                      |  |  |
| 20  | O-ring 17x4 (10x)             | Joint torique 17x4 (10x)            | O-ring 17x4 (10x)                    |  |  |
| 21  | Clip (10x)                    | Clip pour tuyau (x10)               | Clip a innesto (10x)                 |  |  |
| 22  | Union nut                     | Écrou-raccord                       | Ghiera filettata                     |  |  |
| 23  | Clip                          | Épingle                             | Molletta di ritenzione               |  |  |
| 24  | Body (3-way valve)            | Corps (Vanne 3 voies)               | Corpo (3 vie)                        |  |  |
| 26  | Clip 18mm (10x)               | Épingle 18mm (10x)                  | Molletta di ritenzione 18mm (10x)    |  |  |
| 27  | Return pipe 15-35 kW          | Tube retour 15-35 kW                | Tubo di ritorno 15-35 kW             |  |  |
| 28  | Temperature sensor            | Sonde de température                | Sonda di temperatura                 |  |  |
| 29  | Supply pipe 15-35 kW          | Tube départ 15-35 kW                | Tubo di mandata 15-35 kW             |  |  |
| 30  | O-ring 3.53x29.74 (10x)       | Joint torique 3,53x29,74 (10x)      | O-ring 3,53x29,74 (10x)              |  |  |
| 31  | Clip (2x)                     | Bride échangeur de chaleur (2x)     | Clip a innesto (2x)                  |  |  |
| 33  | Pressure sensor               | Capteur de pression                 | Sonda di pressione                   |  |  |
| 34  | O-ring                        | Kit joint torique vanne 3 voies     | O-ring                               |  |  |
| 35  | 3-way valve (15-45kW)         | Vanne à 3 voies (15-45kW)           | Organo 3 vie (15-45kW)               |  |  |
| 36  | Screw M5x16 (5x)              | Vis M5x16 (5x)                      | Vite M5x16 (5x)                      |  |  |
| 37  | Clip                          | Clip de maintien                    | Clip die ritenzione                  |  |  |
| 38  | Plug 18mm                     | Bouchon 18mm                        | Tappo 18mm                           |  |  |
| 54  | O-ring 23x4 (10x)             | Joint torique 23x4 (10x)            | O-ring 23x4 (10x)                    |  |  |
| 55  | O-ring 23,47x2,62 (10x)       | Joint torique 23,47x2,62 (10x)      | O-ring 23,47x2,62 (10x)              |  |  |
| 62  | Motor (3-way valve)           | Servomoteur (vanne 3 voies)         | Motore (Organo 3 vie)                |  |  |
| 64  | Clip (10x)                    | Clip (10x)                          | Clip di fissaggio (10x)              |  |  |
| 68  | Clip (10x)                    | Épingle (10x)                       | Molletta di ritenzione (10x)         |  |  |

**Übersetzungsliste**  
**List of translations**

**Liste des traductions**  
**Traduzione delle descrizioni**

| Pos      | Description                              | Description                            | Descrizione                              |  |  |
|----------|--|--|--|--|--|
| 76       | Screw M5x12 (10x)                        | Vis M5x12 (10x)                        | Vite M5x12 (10x)                         |  |  |
| 80       | Clip 10mm (10x)                          | Épingle D10 (x10)                      | Molletta di ritenzione 10mm (10x)        |  |  |
| 81       | O-ring 6x2,5 (10x)                       | Joint torique 6x2,5 (x10)              | Anello tenuta 6x2,5 (10x)                |  |  |
| 84       | Mixing valve                             | Vanne mélangeuse                       | Valvola miscelatrice                     |  |  |
| 86       | Plug 10mm                                | Bouchon 10mm                           | Tappo 10mm                               |  |  |
| 87       | O-ring 7,75x2,1 (10x)                    | Joint torique 7,75x2,1 (10x)           | O-ring 7,75x2,1 (10x)                    |  |  |
| 88       | Supply pipe (Storage tank RR/ Appliance) | Tube départ (Ballon RR/ Appareil)      | Tubo mandata (Bollitore RR/ Apparecchio) |  |  |
| 89       | Return pipe (external)                   | Tube retour (extérieur)                | Tubo di ritorno (esterno)                |  |  |
| 91       | Clip (10x)                               | Clip (10x)                             | Clip di fissaggio (10x)                  |  |  |
| <b>5</b> | <b>Element of construction</b>           | <b>Groupe d'assemblage</b>             | <b>Gruppo di montaggio</b>               |  |  |
| 1        | Ignition transformer                     | Transformateur d'allumage              | Trasformatore d'accensione               |  |  |
| 2        | Ignition cable                           | Câble d'allumage                       | Cavo d'accensione                        |  |  |
| 3        | Earth cable                              | Câble de mise à la terre               | Cavo di massa                            |  |  |
| 4        | Grommet (Cable guide)                    | Passe-fil (Guide de câble)             | Anello di gomma (Passaggio cavi)         |  |  |
| 5        | Cable harness HV                         | Faisceau de câbles HV                  | Cablaggio HV                             |  |  |
| 6        | Cable harness internal LV                | Faisceau de câbles intérieur LV        | Cablaggio interno LV                     |  |  |
| 7        | Cable harness internal LV                | Faisceau de câbles intérieur LV        | Cablaggio interno LV                     |  |  |
| 8        | Mains cable                              | Câble d'alimentation                   | Cavo di alimentazione                    |  |  |
| 9        | Collar                                   | Gaine                                  | Guaina                                   |  |  |
| 10       | Cable harness LV (Module box)            | Faisceau de câbles LV (Boîtier module) | Cablaggio LV (Scatola del modulo)        |  |  |
| 11       | Cable harness HV (Module box)            | Faisceau de câbles HV (Boîtier module) | Cablaggio HV (Scatola del modulo)        |  |  |
| 13       | Cable + Switch ON/OFF                    | Module MHM avec "ON OFF"               | Cavo + Interruttore ON/OFF               |  |  |
| 14       | Cable harness (Storage tank internal)    | Faisceau de câbles (Ballon intérieur)  | Cablaggio (Bollitore interno)            |  |  |
| 15       | Cable (Storage tank external)            | Câble (Ballon extérieur)               | Cavo (Bollitore esterno)                 |  |  |
| <b>6</b> | <b>Element of construction</b>           | <b>Groupe d'assemblage</b>             | <b>Gruppo di montaggio</b>               |  |  |
| 1        | Control panel Logamatic BC400-FO         | Unité de commande Logamatic BC400-FO   | Interfaccia controllo Logamatic BC400-FO |  |  |
| 2        | Control unit ACU MHP-20                  | Tableau électrique ACU MHP-20          | Centralina ACU MHP-20                    |  |  |
| 3        | Support (Control unit)                   | Support (Tableau électrique)           | Supporto (Centralina)                    |  |  |
| 4        | Strain relief                            | Serre-câble                            | Ferma cavo                               |  |  |
| 5        | Cover (Installer access)                 | Couvercle (accès installateur)         | Copertura (Accesso installatore)         |  |  |
| 6        | Cover (Ip PluX)                          | Cache (Ip PluX)                        | Copertura (Ip PluX)                      |  |  |
| 7        | Lock (PluX)                              | Verrou (PluX)                          | Chiusura (PluX)                          |  |  |

**Übersetzungsliste**  
**List of translations**

**Liste des traductions**  
**Traduzione delle descrizioni**

| Pos      | Description                              | Description                              | Descrizione                              |  |  |
|----------|--|--|--|--|--|
| 8        | Grommet feed 2-pole                      | Passe-câbles 2-pôles                     | Passacavo 2-bipolare                     |  |  |
| 9        | Fastener (2x)                            | Clip de fixation du support d'attache X2 | Gancio di chiusura (2x)                  |  |  |
| 11       | Fuse holder                              | Support de fusible                       | Porta fusibile                           |  |  |
| 12       | Fuse 5x20mm Fast Acting (5x)             | Fusible 5x20mm Fast Acting (5x)          | Fusibile 5x20mm Fast Acting (5x)         |  |  |
| 13       | Code plug 20337                          | HCM 20337                                | HCM 20337                                |  |  |
| 13       | Code plug 20325                          | HCM 20325                                | HCM 20325                                |  |  |
| 13       | Code plug 20327                          | HCM 20327                                | HCM 20327                                |  |  |
| 13       | Code plug 20383                          | HCM 20383                                | HCM 20383                                |  |  |
| 13       | Code plug 20335                          | HCM 20335                                | HCM 20335                                |  |  |
| 13       | Code plug 20329                          | HCM 20329                                | HCM 20329                                |  |  |
| 13       | Code plug 20331                          | HCM 20331                                | HCM 20331                                |  |  |
| 13       | Code plug 20333                          | HCM 20333                                | HCM 20333                                |  |  |
| 14       | Connector 2-pole (pure orange) RAL2004   | Connecteur 2-pôles (orangé pur) RAL2004  | Morsetto 2-pol (arancio puro) RAL2004    |  |  |
| 15       | Connector 2-pole (light blue) RAL5012    | Connecteur 2-pôles (bleu clair) RAL5012  | Morsetto 2-pol (blu luce) RAL5012        |  |  |
| 16       | Connector 2-pole (signal blue) RAL5005   | Connecteur 2-pôles(bleu sécurité)RAL5005 | Morsetto 2-pol (blu segnale) RAL5005     |  |  |
| 17       | Connector 2-pole (yellow green) RAL6018  | Connecteur 2-pôles (vert jaune) RAL6018  | Morsetto 2-pol (verde giallastro)RAL6018 |  |  |
| 18       | Connector 2-pole (silver grey) RAL7001   | Connecteur 2-pôles (gris argent) RAL7001 | Morsetto 2-pol (grigio argento) RAL7001  |  |  |
| 19       | Connector 2-pole (graphite grey) RAL7024 | Connecteur 2-pôles(gris graphite)RAL7024 | Morsetto 2-pol (grigio grafite) RAL7024  |  |  |
| 20       | Connector 2-pole (pastel violet) RAL4009 | Connecteur 2-pôles(violet pastel)RAL4009 | Morsetto 2-pol(violetto pastello)RAL4009 |  |  |
| 21       | Connector 2-pole (signal green) RAL6032  | Connecteur 2-pôles(vert sécurité)RAL6032 | Morsetto 2-pol (verde segnale) RAL6032   |  |  |
| 24       | Connector 2-pole (cream) RAL9001         | Connecteur 2-pôles (blanc crème) RAL9001 | Morsetto 2-pol (bianco crema) RAL9001    |  |  |
| 25       | Connector 2-pole (red violet) RAL4001    | Connecteur 2-pôles (violet rouge)RAL4001 | Morsetto 2-pol (viola rossastro) RAL4001 |  |  |
| 26       | Connector 2-pole (orange brown) RAL8023  | Connecteur 2-pôles (brun orangé) RAL8023 | Morsetto 2-pol (marrone arancio) RAL8023 |  |  |
| 27       | Screw M5X12 (10x)                        | Vis M5X12 (10x)                          | Vite M5X12 (10x)                         |  |  |
| 28       | Connector kit                            | Jeu de connecteurs                       | Set morsetti di collegamento             |  |  |
| 29       | Outdoor temperature sensor               | Sonde de température extérieure neutre   | Sonda temperatua esterna                 |  |  |
| <b>7</b> | <b>Element of construction</b>           | <b>Groupe d'assemblage</b>               | <b>Gruppo di montaggio</b>               |  |  |
| 1        | Pump                                     | Pompe                                    | Pompa                                    |  |  |
| 2        | Gasket 1" (10x)                          | Joint 1" fibre (10x)                     | Guarnizione 1" (10x)                     |  |  |
| 3        | Union nut                                | Écrou-raccord                            | Ghiera filettata                         |  |  |
| 4        | Clip                                     | Clip                                     | Clip a innesto                           |  |  |
| 5        | Pipe (Domestic cold water)               | Tube (Eau froide)                        | Tubo (Acqua fredda)                      |  |  |

**Übersetzungsliste**  
**List of translations**

**Liste des traductions**  
**Traduzione delle descrizioni**

| Pos | Description                          | Description                             | Descrizione                              |  |  |
|-----|--------------------------------------|---|--|--|--|
| 6   | O-ring 13,87x3,53 (10x)              | Joint torique 13,87x3,53 (x10)          | O-ring 13,87x3,53 (10x)                  |  |  |
| 7   | Clip (5x)                            | Epingle (5x)                            | Molletta di ritenzione (5x)              |  |  |
| 8   | Supply pipe (Pump)                   | Tube départ (Pompe)                     | Tubo di mandata (Pompa)                  |  |  |
| 9   | Thermopocket                         | Support de sonde                        | Pozzetto per sensore                     |  |  |
| 10  | Flow sensor                          | Sonde de débit                          | Sensore di portata                       |  |  |
| 11  | Filter                               | Filtre                                  | Filtro                                   |  |  |
| 12  | Connection nipple                    | Raccord à vis                           | Capezzolo idraulico filettato            |  |  |
| 13  | Clip (5x)                            | Epingle (5x)                            | Molletta di ritenzione (5x)              |  |  |
| 14  | Temperature sensor                   | Sonde de température                    | Sonda di temperatura                     |  |  |
| 15  | O-ring 9.25x1.78 (10x)               | Joint torique 9,25 x 1,78 (10x)         | O-ring 9,25x1,78 (10x)                   |  |  |
| 16  | Fill and drain cock                  | Vanne remplissage et vidange            | Rubinetto di carico e scarico            |  |  |
| 17  | Leveling foot (2x)                   | Vis de réglage (2x)                     | Vite di regolazione (2x)                 |  |  |
| 18  | Plate heat exchanger                 | Échangeur à plaques                     | Scambiatore di calore a piastre          |  |  |
| 19  | O-ring 25.08x8 (10x)                 | Joint torique 25.08x8 (10x)             | O-ring 25.08x8 (10x)                     |  |  |
| 20  | Supply pipe (Plate heat exchanger)   | Tube départ (Échangeur à plaques)       | Tubo di mandata (Scambiatore di calore a |  |  |
| 21  | Supply pipe (Storage tank)           | Tube départ (Ballon)                    | Tubo di mandata (Bollitore)              |  |  |
| 22  | Sealing (10x)                        | Joint plat 3/4" (10x)                   | Guarnizione piatta 3/4" (10x)            |  |  |
| 23  | Pipe (Domestic hot water)            | Tube (Eau chaude)                       | Tubo (Acqua calda)                       |  |  |
| 24  | Manifold (Plate heat exchanger) (2x) | Raccordement (Échangeur à plaques) (2x) | Raccordo Scambiatore calore piastre (2x) |  |  |
| 25  | Supply pipe (Boiler)                 | Tube départ (Chaudière)                 | Tubo di mandata (Caldaia)                |  |  |
| 26  | Return pipe (Boiler)                 | Tube retour (Chaudière)                 | Tubo di ritorno (Caldaia)                |  |  |
| 27  | Storage tank T40s                    | Ballon T40s                             | Bollitore T40s                           |  |  |
| 29  | Temperature sensor (DHW)             | Sonde de température eau chaude         | Sonda di temperatura (Acqua calda)       |  |  |
| 30  | Clip                                 | Epingle                                 | Molletta di ritenzione                   |  |  |
| 31  | O-ring 9.25x1.78 (10x)               | Joint torique 9,25 x 1,78 (10x)         | O-ring 9,25x1,78 (10x)                   |  |  |
| 33  | Connection nipple 1/2"               | Raccordement 1/2" sanitaire             | Capezzolo idraulico filettato 1/2"       |  |  |
| 34  | Front panel (Storage tank) T40s      | Panneau avant (Ballon) T40s             | Pannello (Bollitore) T40s                |  |  |
| 35  | Flow limiter 15l/min E-W green       | Limiteur de débit 15l/min E-W vert      | Limitatore di portata 15l/min E-W verde  |  |  |
| 37  | Non-return valve                     | Clapet anti-retour                      | Valvola di non ritorno                   |  |  |
| 38  | O-ring 85x5.3                        | Joint torique 85x5,3                    | O-ring 85x5.3                            |  |  |
| 41  | Wall mounting bracket                | Plaque d'accrochage                     | Supporto a parete                        |  |  |

**Gerätetypen**  
**Types of appliances**

**Types de chaudières**  
**Tipo apparecchi**

| Gerät<br>Appliance<br>Chaudière<br>Apparecchio |               | Land<br>Country<br>Pays<br>Paese | Bemerkungen<br>Remarks<br>Remarques<br>Osservazioni |
|--|---------------|----------------------------------|---|
| GB192i.2-15 H                                  | 7 736 702 059 | AT,DE,LU                         |   |
| GB192i.2-15 W H                                | 7 736 702 058 | AT,DE,LU                         |   |
| GB192i.2-25 H                                  | 7 736 702 061 | AT,DE,LU                         |   |
| GB192i.2-25 W H                                | 7 736 702 060 | AT,DE,LU                         |   |
| GB192i.2-35 W H                                | 7 736 702 062 | AT,DE,LU                         |   |
| GB192i.2-50 W H                                | 7 736 702 066 | AT,DE,LU                         |   |
| GBH192i.2-15 H                                 | 7 736 702 063 | AT,DE,LU                         |   |
| GBH192i.2-25 H                                 | 7 736 702 064 | AT,DE,LU                         |   |
| GBH192i.2-35 H                                 | 7 736 702 065 | AT,DE,LU                         |   |
|  |               |                                  |   |
| GB192i.2-30 T40S W H                           | 7 736 702 067 | DE,LU                            |   |

Bosch Thermotechnik GmbH  
Sophienstr. 30-32  
D-35576 Wetzlar / Germany

**Buderus**