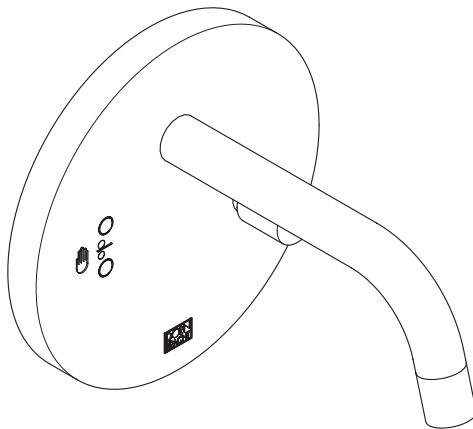


Dornbracht Montageanleitung

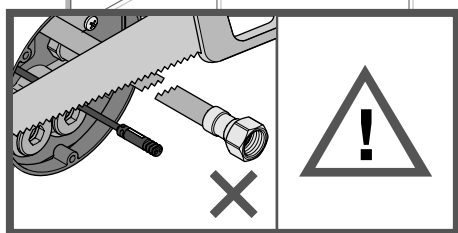
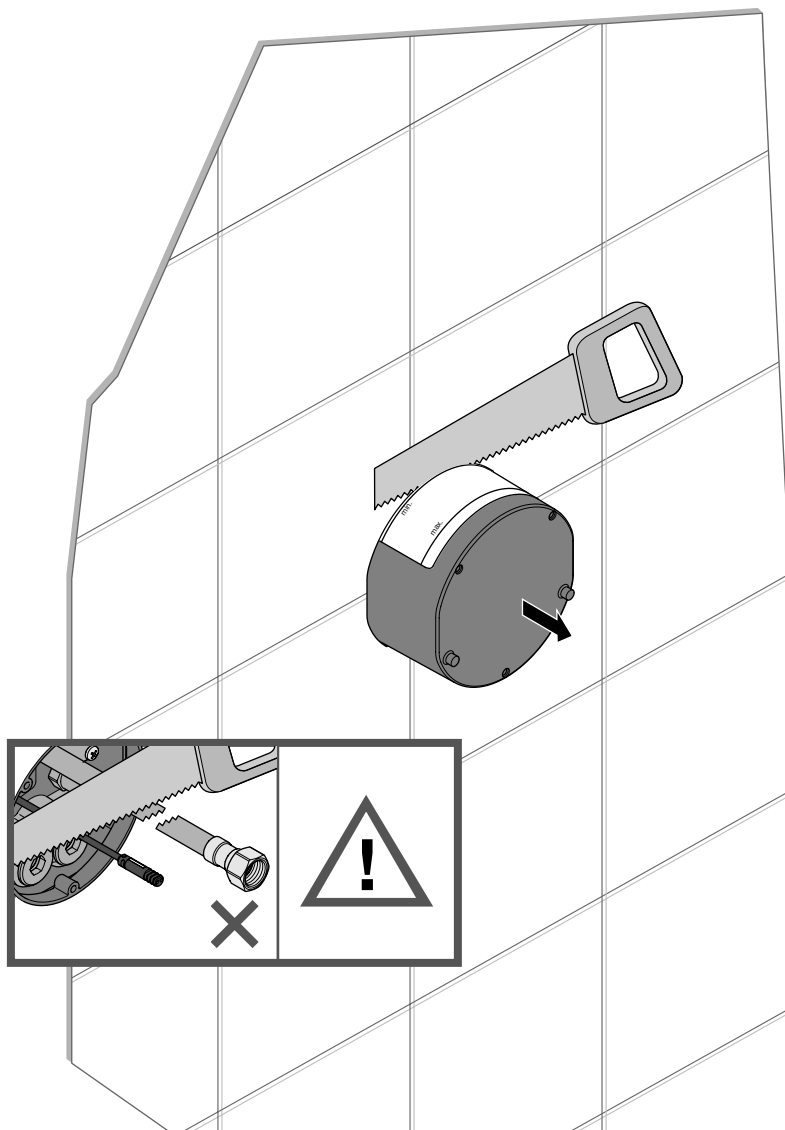
Installation instructions
Montagehandleiding
Instructions de montage
Istruzioni di montaggio
Instrucciones de montaje
Installation instructions
Monteringsanvisning
Montážní návod
Instrukcja montażu
Инструкция по монтажу
安装指导

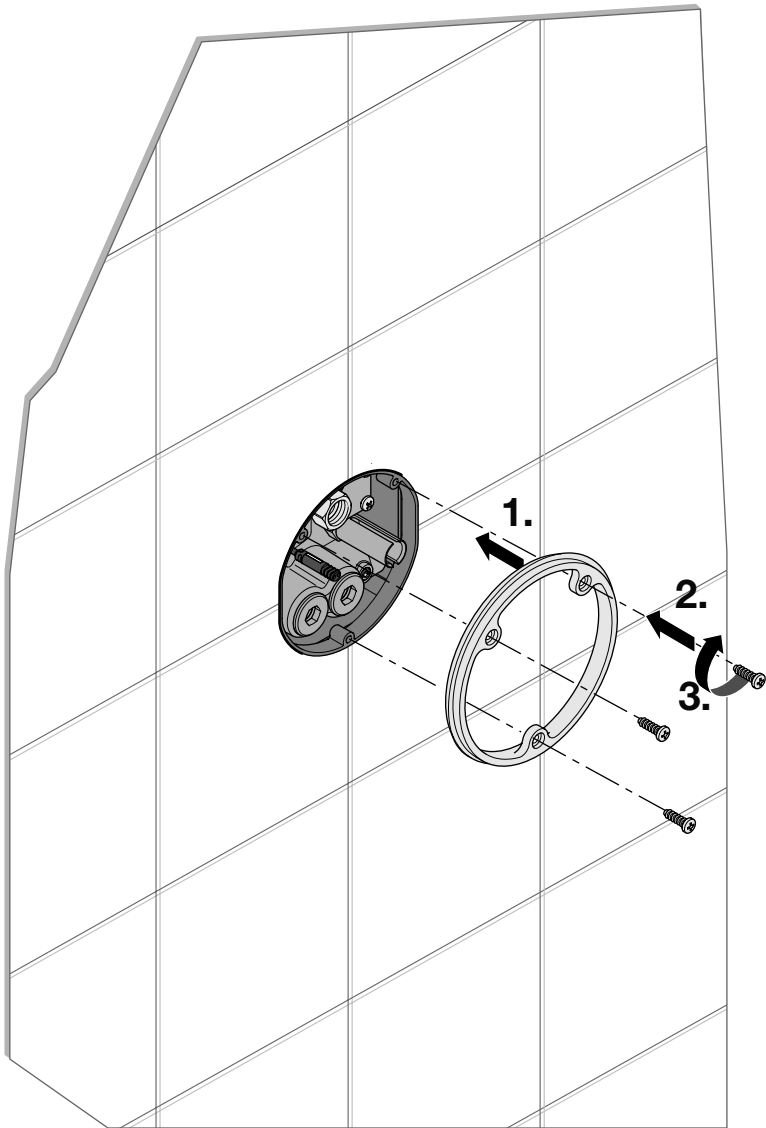


Lieferumfang // Parts supplied // Omvang van de levering // Pièces livrées // Entità di forniture // Volumen de suministro // Parts Supplied // Leveransomfang // Rozsah dodávky // Zakres dostawy // Объем поставки // 供货范围

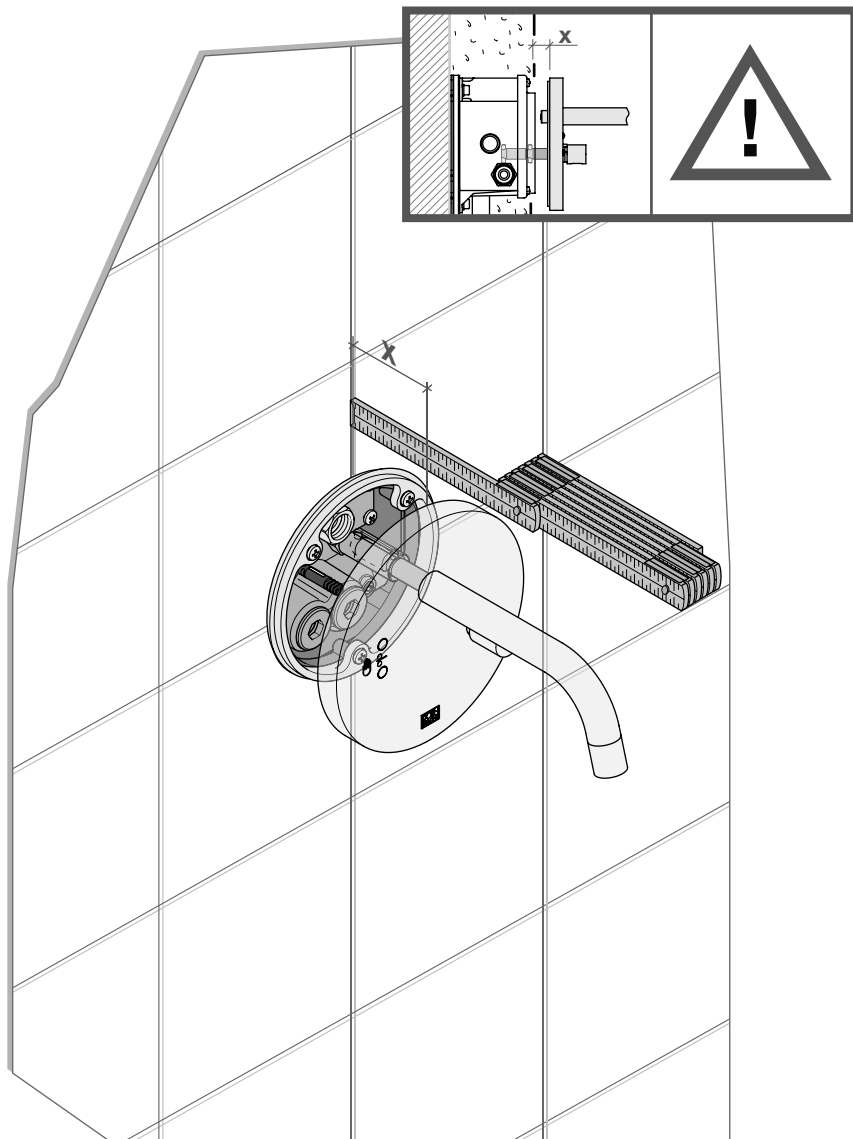


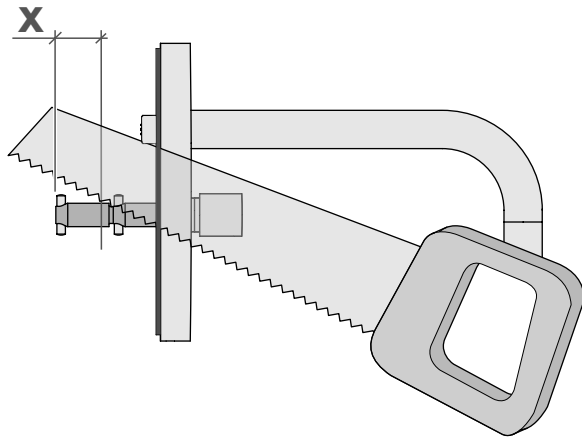
1

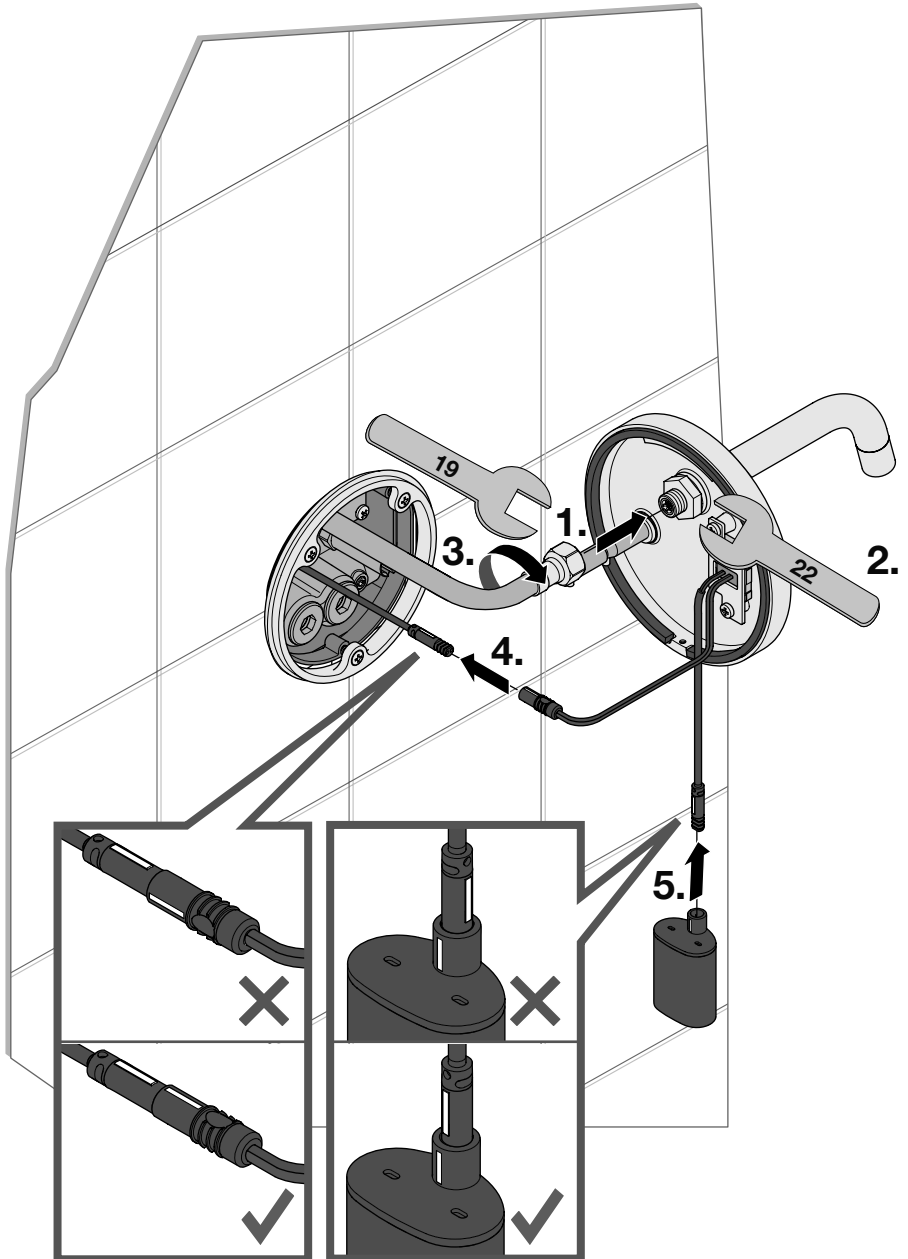


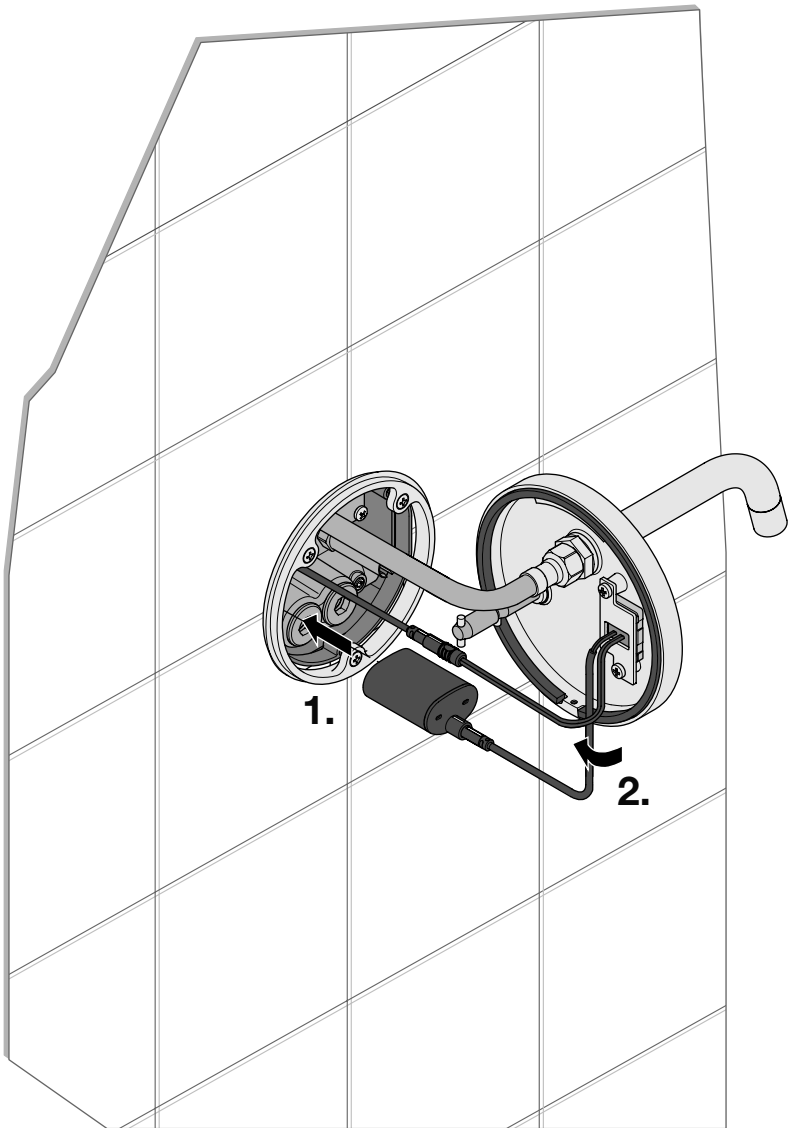


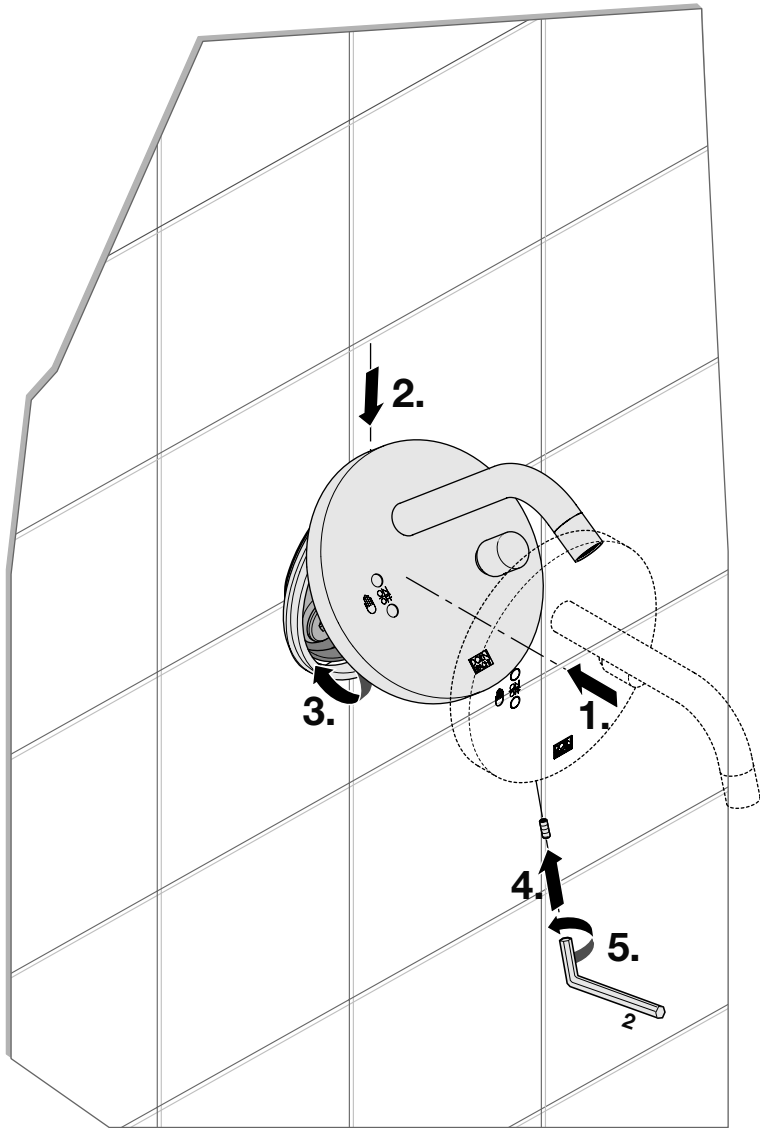
3



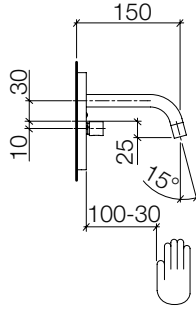
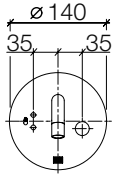






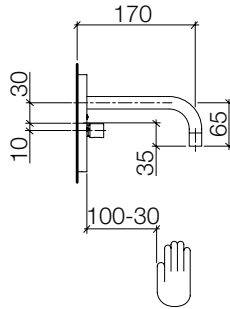
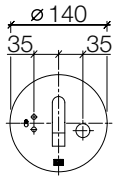


36 730 850



mm

36 731 850



mm

DE Betriebsbedingungen

Geräuschklasse I nach DIN 4109.

GB Operating conditions

Noise class I according to DIN 4109.

NL Voorwaarden voor het gebruik

Geluidsklasse I volgens DIN 4109.

FR Conditions d'utilisation

Catégorie I isolation phonique DIN 4109.

IT Condizioni di funzionamento

Classe di rumore I ai sensi della norma DIN 4109.

ES Condiciones de operación

Categoría de ruido I según la norma DIN 4109.

US Operating conditions

Noise class I according to DIN 4109.

SE Driftsvillkor

Bullerklass I enligt DIN 4109.

CZ Provozní podmínky

Hluková třída I podle DIN 4109.

PL Warunki robocze

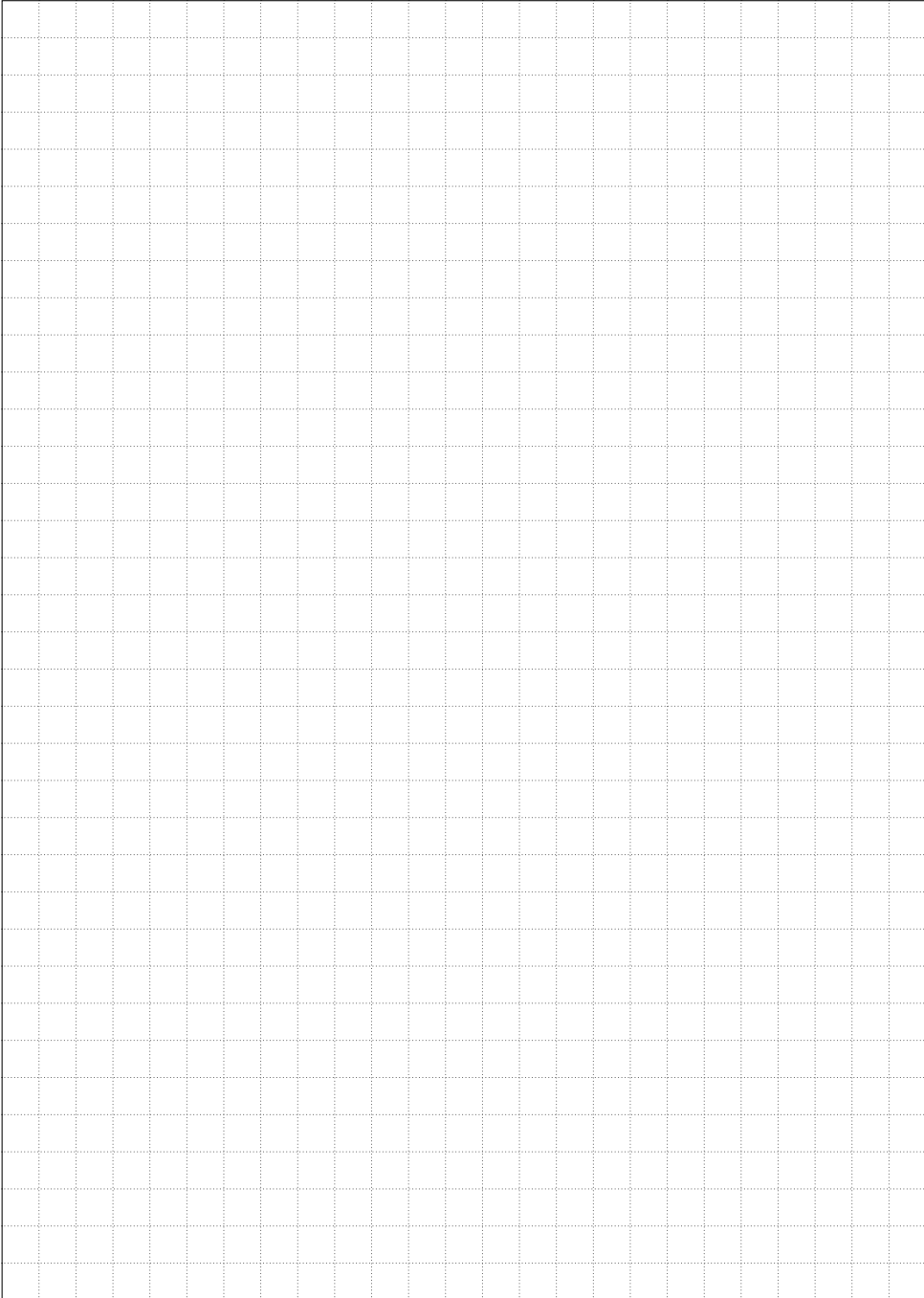
Klasa poziomu szumów I wg DIN 4109.

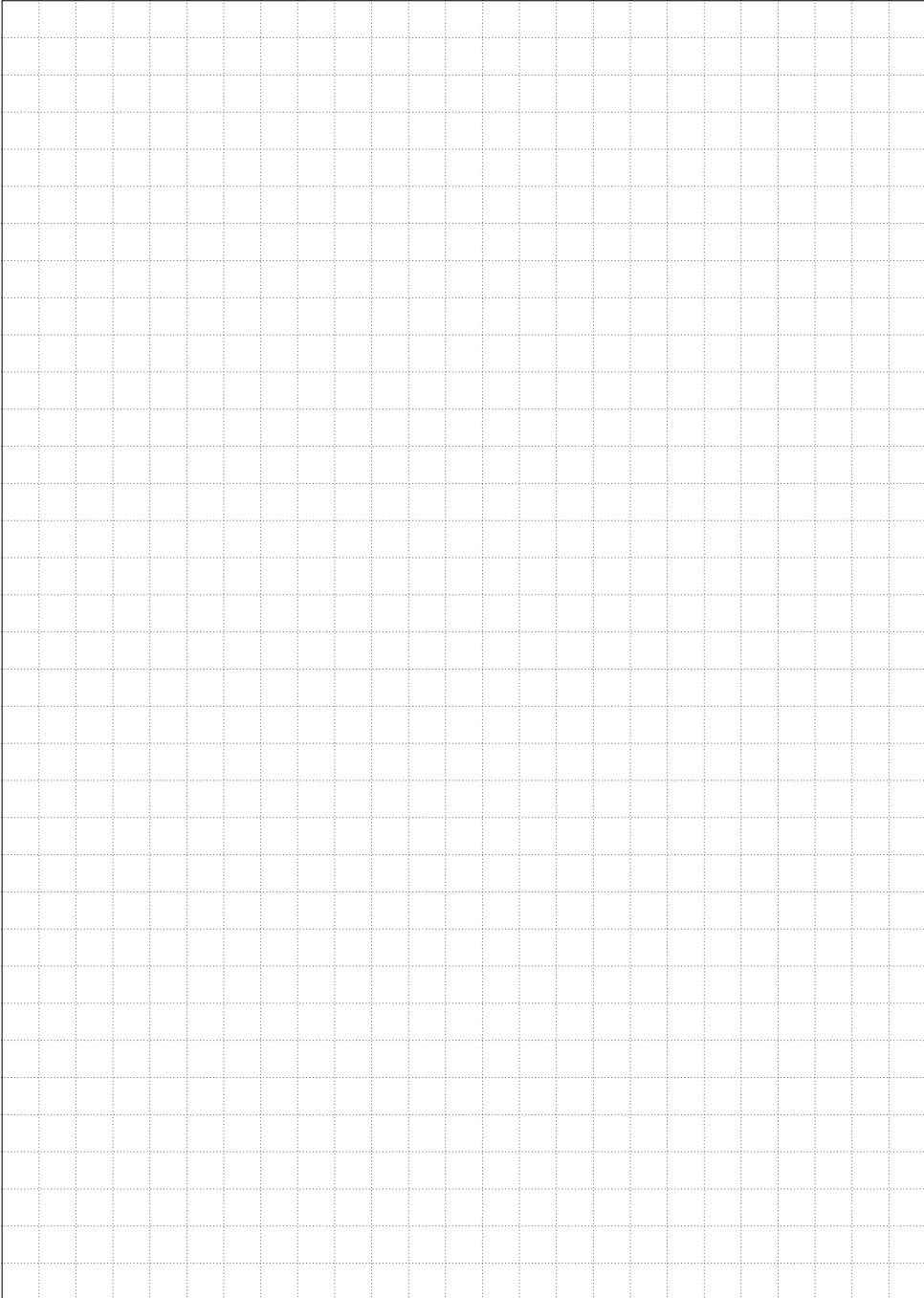
RU Условия эксплуатации

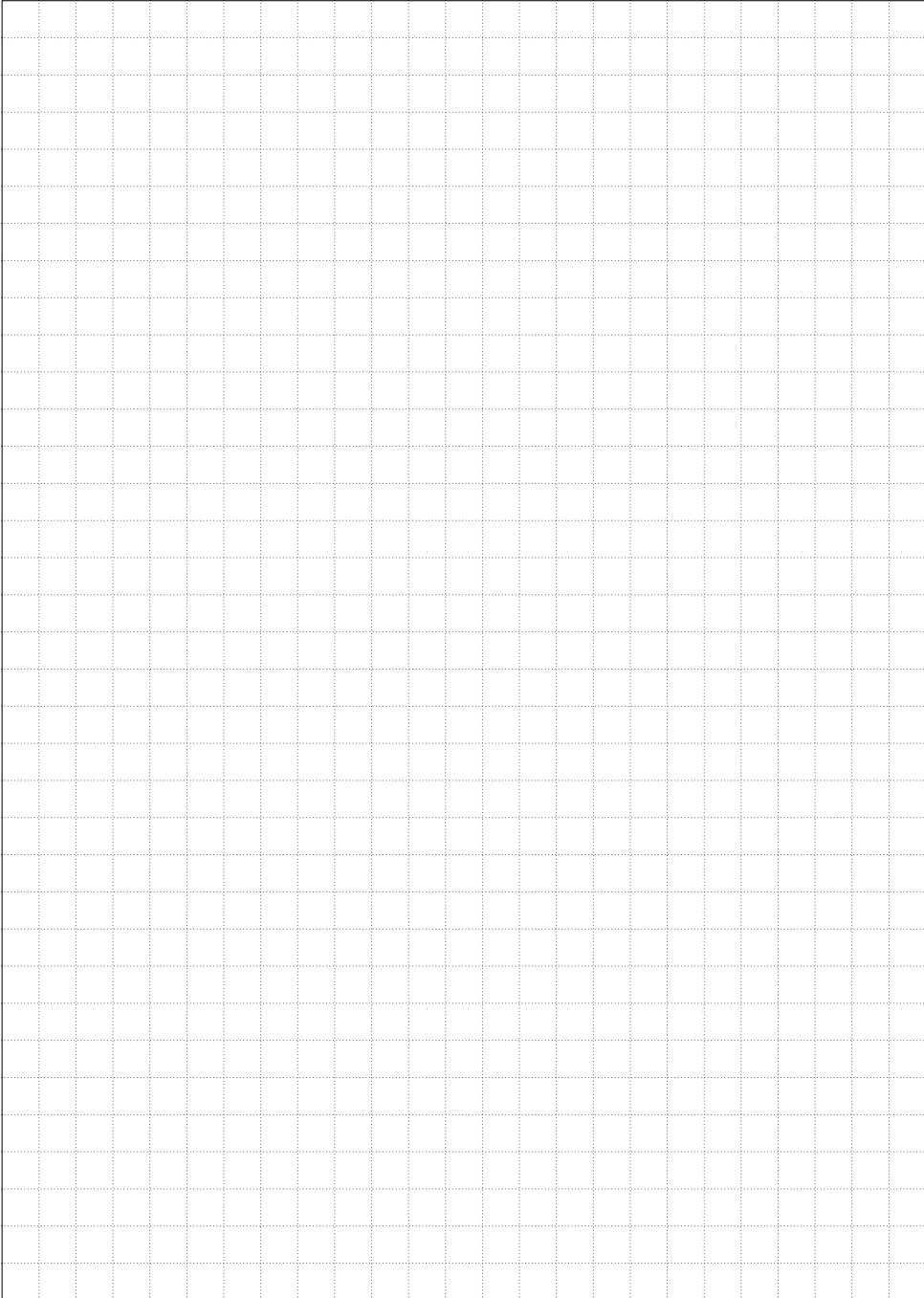
Класс шумоизоляции I по DIN 4109.

CN

依照 DIN 4109 噪声级 I







Aloys F. Dornbracht GmbH & Co. KG Armaturenfabrik
Köbbingser Mühle 6, D-58640 Iserlohn
Tel. +49(0)2371433-0, Fax +49(0)2371433-232
mail@dornbracht.de, dornbracht.com

Dornbracht Group

Premium Solutions for Interior Architecture



01 03 08 850 00 / 02.2019