

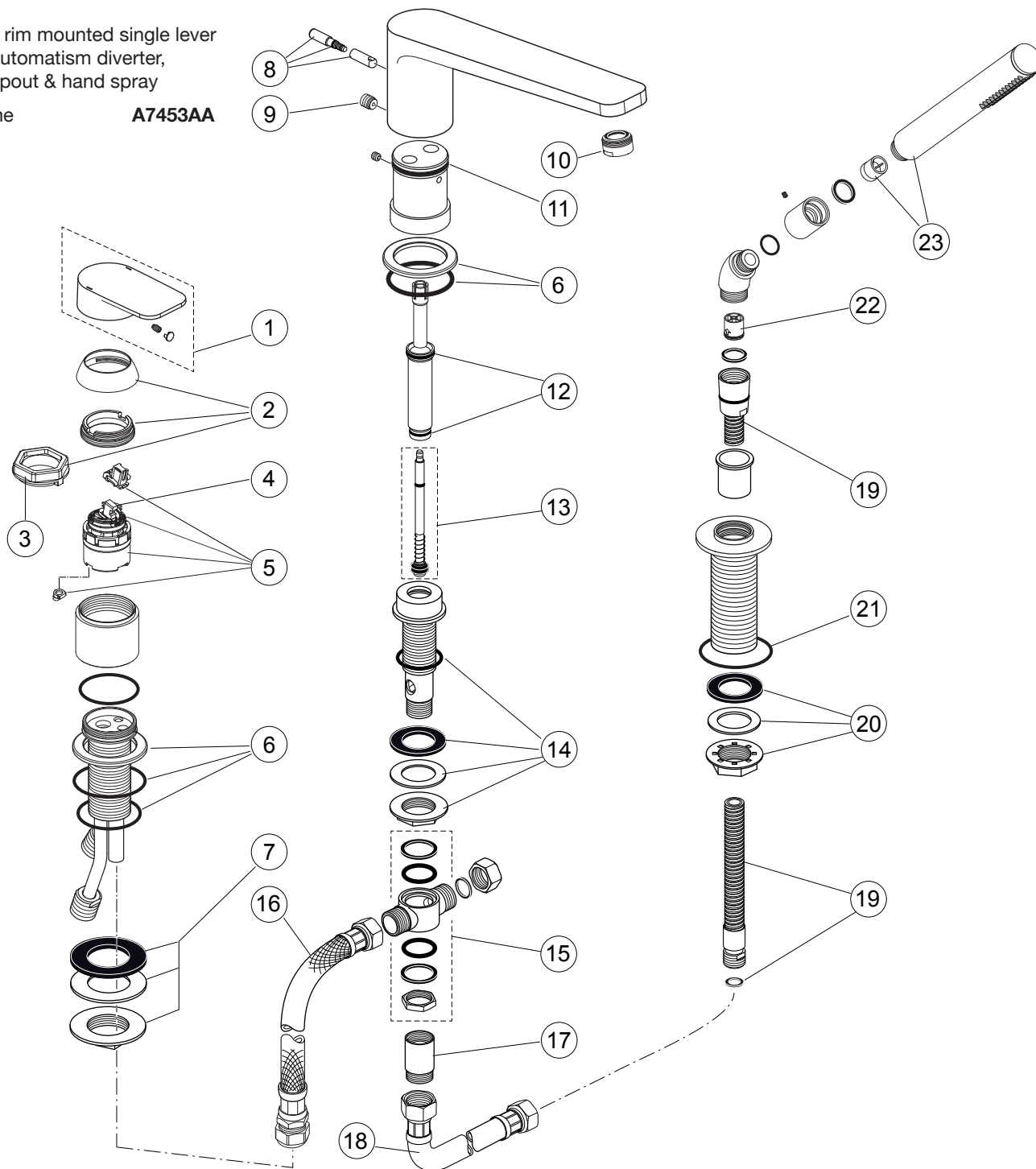


Tonic II A6348..

Ideal Standard

Produced from: **March 2021**

3Hole rim mounted single lever
with automatism diverter,
with spout & hand spray
chrome **A7453AA**



Pos.	Description	Part-Number	Qty.	Pos.	Description	Part-Number	Qty.
1	Lever cpl. with red/blue	A 860 917 AA	1 Set	15	T-Piece complete	H 960 128 NU	1 Set
2	Cover cap + ring + key	B 960 862 AA	1 Set	16	Flex. hose G1/2 x 400mm	A 962 823 NU	1 pcs
3	Key for pos. 2	B 960 650 NU	1 pcs	17	Non-return valve complete	A 963 287 AA	1 pcs
4	Hot limit stop	A 861 181 NU	1 pcs	18	Flex. hose G1/2 + washer	H 960 185 NU	1 pcs
5	Cartridge Ø38 + Pos. 3	A 861 156 NU*	1 Set	19	Shower hose G1/2 -M15x1	H 960 440 AA	1 pcs
6	Escutcheon + O-rings	A 860 918 AA	1 Set	20	Fixation kit shower-holder	H 960 657 NU*	1 Set
7	Fixation kit G 1"	H 960 294 NU	1 Set	21	O - ring Ø 48 x 3	F 961 021 NU	1 pcs
8	Lift rod knob complete	A 962 349 AA	1 Set	22	Non-return valve	A 962 594 NU	2 pcs
9	Thread pin M10x1	A 961 807 NU	1 pcs	23	Hand shower with flow limiter 8l/min	A 861 098 AA	1 pcs
10	Aerator M24x1 -C-	B 961 059 AA	1 Set				
11	O - ring Ø 39,34 x 2,62	A 960 331 NU*	1 Set				
12	O - ring set	F 960 894 NU	1 Set				
13	Diverter spindle complete	F 960 895 NU	1 Set				
14	Fixation kit Spout	H 960 380 NU*	1 Set				

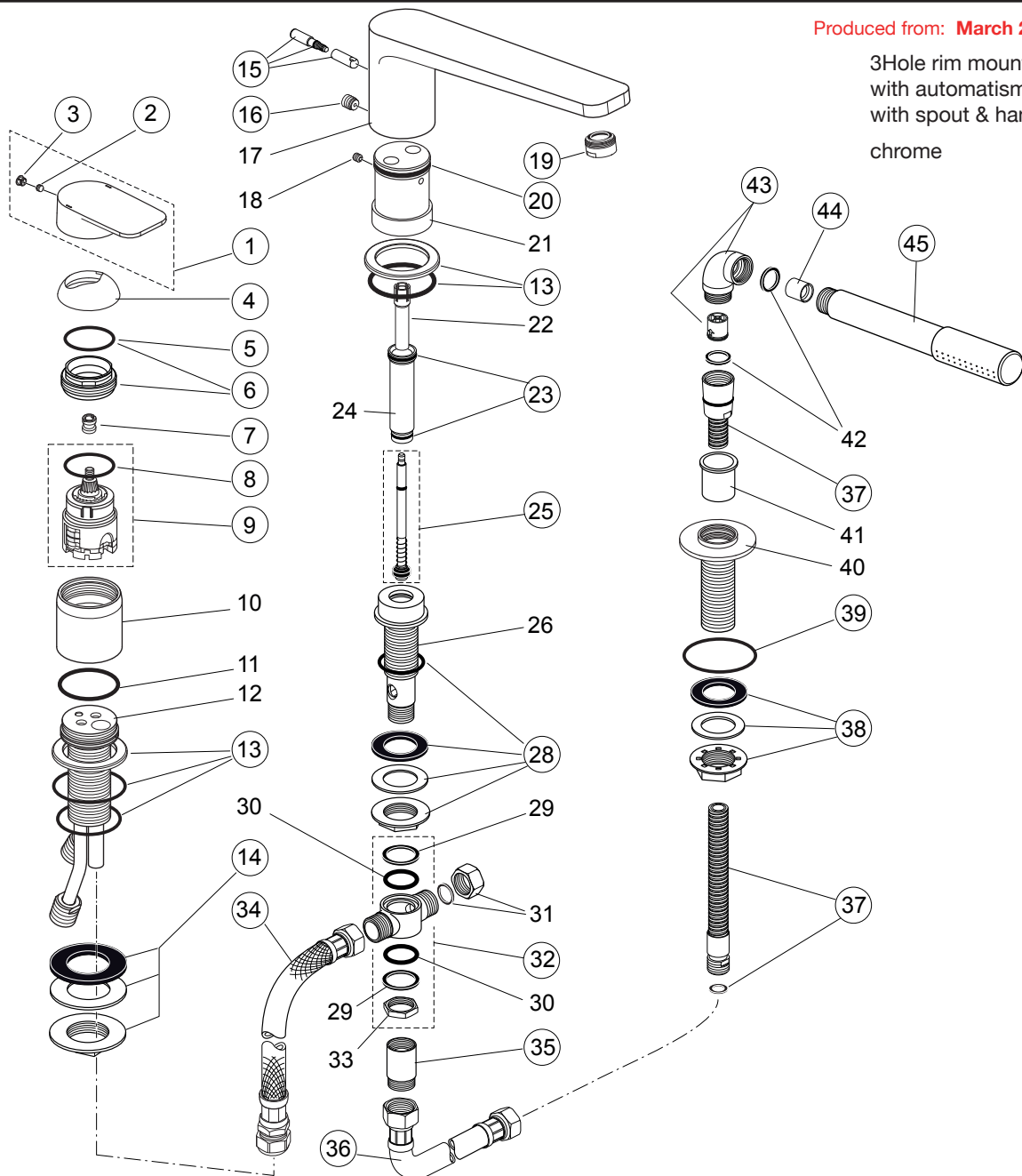
**Universal set (not all parts needed)*

Tonic II A6348..



Produced from: **March 2015 - Feb. 2021**

3Hole rim mounted single lever
with automatism diverter,
with spout & hand spray
chrome **A6348AA**



Pos.	Description	Part-Number	Qty.	Pos.	Description	Part-Number	Qty.
1	Lever cpl. with red/blue	A 860 917 AA	1 pcs	24	Sleeve adapter	F 960 895 NU	1 Set
2	Thread pin M5x6 DIN914	A 860 603 NU	1 pcs	25	Diverter spindle complete	F 960 895 NU	1 Set
3	Handle cap	A 960 396 AA	1 pcs	26	Shaft for Spout		
4	Cover cap	A 961 485 AA	1 pcs	28	Fixation kit Spout	H 960 380 NU*	1 Set
5	O - ring Ø 28,3 x 1,78	A 860 818 NU	1 pcs	29	Washer		
6	Clamping nut M43 x 1,5 cpl.	N 960 019 AA	1 Set	30	O - ring Ø 21 x 3,5		
7	Srew adapter	A 963 372 NU	1 pcs	31	Plug G1/2 with Fibre-ring		
8	O - ring Ø 35 x 3,2	A 962 715 NU	1 pcs	32	T-Piece complete	H 960 128 NU	1 Set
9	Cartridge Multiport cpl.	A 860 621 NU	1 pcs	33	Nut G1/2 - A/F 24mm		
10	Cover			34	Flex. hose G1/2 x 400mm	A 962 823 NU	1 pcs
11	O - ring Ø 40 x 3,0			35	Non-return valve complete	A 963 287 AA	1 pcs
12	Body Single lever			36	Flex. hose G1/2 + washer	H 960 185 NU	1 pcs
13	Escutcheon +O-rings	A 860 918 AA	1 Set	37	Shower hose G1/2 -M15x1	H 960 440 AA	1 pcs
14	Fixation kit G 1"	H 960 294 NU	1 Set	38	Fixation kit shower-holder	H 960 657 NU*	1 Set
15	Lift rod knob complete	A 962 349 AA	1 Set	39	O - ring Ø 48 x 3	F 961 021 NU	1 pcs
16	Thread pin M10x1	A 961 807 NU	1 pcs	40	Holder for hand shower		
17	Spout			41	Plastic insert		
18	Screw M6 x 6 Din 916			42	Washer Ø 20,8 x 14,5 x 2,5		
19	Aerator M24x1 -C-	B 961 059 AA	1 Set	43	Elbow 96° f. Hand spray	F 960 865 AA	1 pcs
20	O - ring Ø 39,34 x 2,62	A 960 331 NU*	1 Set	44	Flow limiter 8l/min	B 961 093 NU	1 pcs
21	Insert			45	Hand shower	F 960 900 AA	1 pcs
22	Sleeve for diverter						
23	O - ring set	F 960 894 NU	1 Set				

*Universal set (not all parts needed)