

INSERT

Washplace, wall-hung, glazed steel, with one tap hole, right, without overflow, including fixing set, drain valve



DIMENSIONS

Length	350 mm
Width	350 mm
Height	470 mm

COLOUR AND FINISH

711 Brown antracite

OPTIONS

111 - one tap hole, without overflow

Back glazed

Bowl length (mm) : 355

Bowl position : Central

Bowl width (mm) : 350

Corner basin

Fixing kit : Included

Glazed base

Installation type : Wall-hung

Internal Shape : 1 - Round

Material : Glazed steel

Net weight (kg) : 7.35

Overflow type : Standard

Plug and Waste : Included

Shape : Rectangular

Taphole configuration : No tapholes

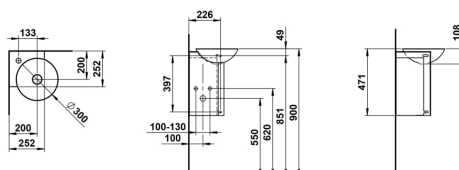
Trap : Included

Waste : Included

Weight (Kg) : 7.35

Without overflow

TECHNICAL DRAWINGS



INSERT

Small Bathrooms Demand Smart Solutions – With INSERT, Even the Smallest Space Becomes a Stylish Oasis

INSERT combines compact elegance with thoughtful functionality. High-quality materials and precise craftsmanship ensure lasting beauty that gives every room character and personality.

